

PLAYGROUND SUBURB ANALYSIS

ACTIVE KINGSTON



City of
KINGSTON

WATERWAYS



Lake King Circle Playground

WHO LIVES HERE...

2023 Playgrounds

There are **2 playgrounds** and **3 active recreation facilities**.

2023 Population

2,468 people are estimated to live in Waterways in 2023 (2% of the Kingston population)

Population change

Forecast change from **2023 to 2038:**

Estimated decrease 70 people (-3%)

Population change from **2016 to 2021:**

Decrease 33 people (-1%)

Age group with the greatest increase of people from **2016 to 2021:**

55–59 years 65 people (+57%)

In 2021

Assistance needed due to a disability:
78 people (3%)

Care provided to a person with a disability, long term illness or old age:
232 people (12%)

Born overseas
1,060 people (44%)

TOP 3

languages other than English spoken at home:

Mandarin 218 (9%)

Vietnamese 141 (6%)

Khmer 77 (3%)

Households

There were **722** households in Waterways (1% of Kingston's total households)

Median weekly household income \$3,028

Households did not own a vehicle 6 (1%)

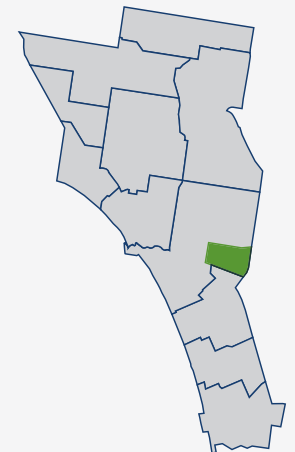
TOP 4 household types:

Couples with children 440 (61%)

Couples without children 152 (21%)

One parent family 68 (9%)

Lone person 43 (6%)



PLAY SPACE AND ACTIVE RECREATION FACILITIES

PLAY SPACE CLASSIFICATION

Small Local	Local	Suburb	District	Regional
1	1	-	-	-

PLAY SPACE ACCESS AND DIVERSITY

Playground – Location	Classification	Year of Construction	Level of Inclusive and Accessible Play			Range of Play Activities (age groups)			
			Reasonable	Some	Difficult	Toddler/ Pre-School	Primary School	Senior Primary	Teen / Adult
Lake King Circle Reserve	Local	2014			✓	✓	✓	✓	✓
Serpentine Court Reserve	Small Local	2004			✓	✓	✓	✓	✓

ACTIVE RECREATION FACILITIES

Location	Asset	Year of Construction	Age
Lake King Circle Reserve	AFL Goals	2000	23
Serpentine Court Reserve	Outdoor Fitness Equipment	2004	19
Waterways Estate	Outdoor Fitness Equipment	2013	10

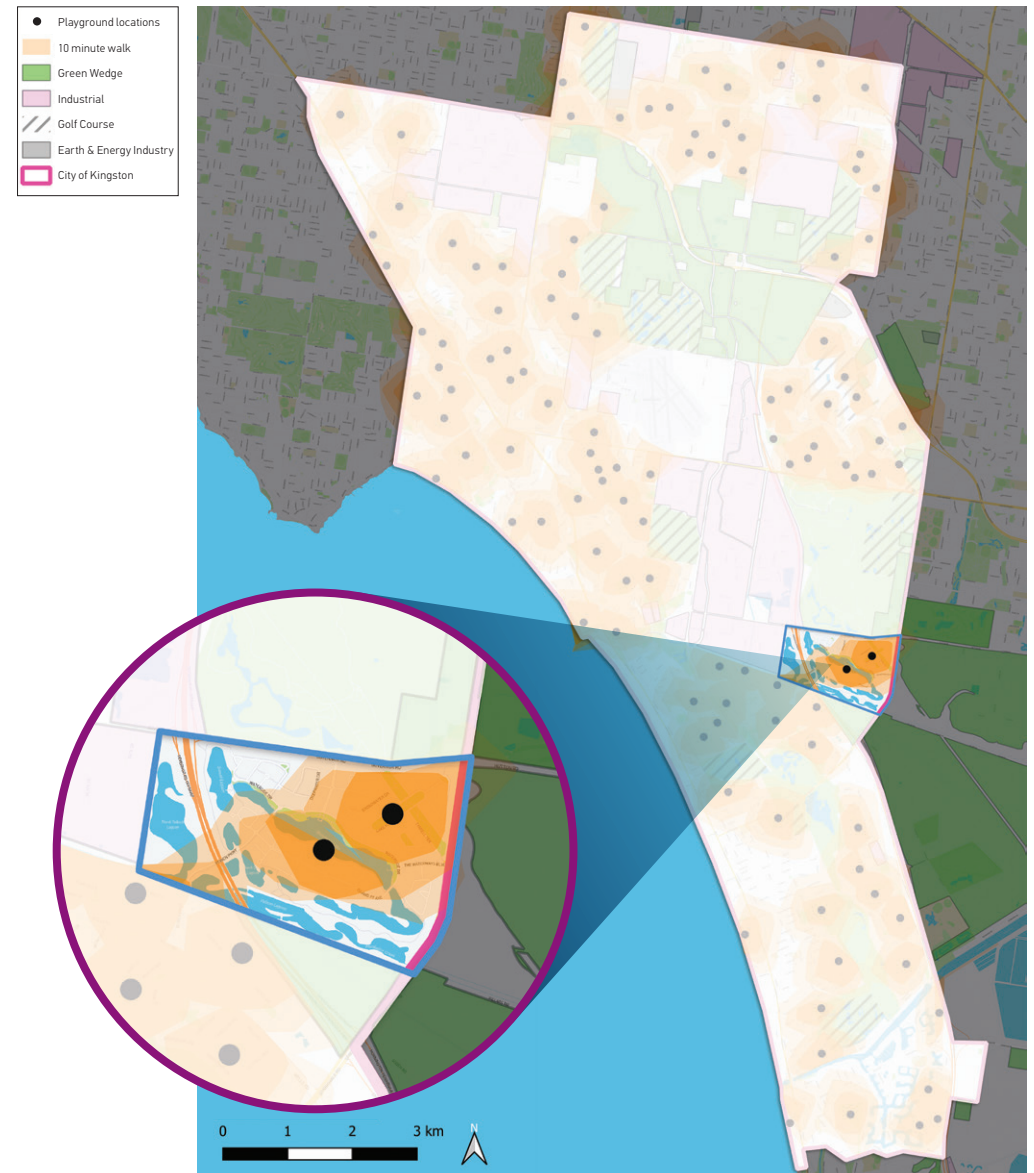
WALKABLE CATCHMENTS – 10 MINUTE WALK

Council’s service level for walkable access to a play space is up to 10-minutes walk from home to a play space for every resident. In 2023, 97% of our residential population can walk ten minutes (approximately 800m) to a play space.

In Waterways, 89% of the population has access to play within a 10-minute walk from home. This is shown below:

POPULATION WITHIN 10 MINUTE WALK OF A PLAY SPACE

Total Population (2023)	Population within 800m	Percentage of population
2,468	2,197	89%



PLAYGROUND GAP ANALYSIS

The application of the general planning provision of one playground per 1,400 residents demonstrates that across 2021 to 2036 (population forecast) there is a marginal surplus of playgrounds in Waterways – refer table below. With no forecast population growth, this surplus is expected to be maintained.

Suburb	No. of Play Spaces	Total Suburb Population				Ideal Playground Provision Rate (1:1,400 people)				2021 Deficit/ Surplus
		2021	2026	2031	2036	2021	2026	2031	2036	
Waterways	2	2,445	2,415	2,425	2,402	1.7	1.7	1.7	1.7	0.3



ISSUES AND OPPORTUNITIES



Issues and opportunities



- » Population projections suggest that demand for playgrounds won't increase over the next 20 years. Current provision levels are adequate to service existing population.
- » 89% of the population in Waterways are within a 10-minute walk of a play space. Appropriate provision within this residential estate is important, especially within a walkable catchment from home. Access to neighbouring suburbs is generally via vehicle.
- » Given the relative stability of the population living in Waterways, there may be opportunity to alter play offering provided at each of the existing play spaces and/or change the active recreation options to suitably reflect existing and forecast population aspirations.
- » Consider the role of the 2023 Open Space Strategy in amendment/ expansion of open space function of existing spaces, where demand exists.
- » Considerable shared paths are provided around the waterways in this suburb, serving as an additional physical activity option (walking and cycling are the two most popular active recreation pursuits in Kingston, by Kingston residents).
- » Braeside Park (owned and managed by Parks Victoria) is located adjacent to Waterways and offers a Regional play space.

STRATEGIC INTENTIONS... WHAT ARE WE GOING TO DO?



Strategic Intentions

- » Prepare an open space master plan for the suburb of Waterways (with a focus on public facilities and amenities) as identified in the 2023 Open Space Strategy.
- » Uplift provision at Lake King Circle play space to offer additional active recreation options such as multi-use court for all ages in this location.
- » Improve access for residents of Waterways to the Parks Victoria owned and managed Regional play space at Braeside Park.

