

PLAYGROUND SUBURB ANALYSIS

ACTIVE KINGSTON



City of
KINGSTON

PATTERSON LAKES



WHO LIVES HERE...

2023 Playgrounds

There are **5 playgrounds** and **3 active recreation facilities**.

2023 Population

7,982 people are estimated to live in Patterson Lakes in 2023 (5% of the Kingston population)

Population change

Forecast change from **2023 to 2038:**

Estimated increase 279 people (+4%)

Population change from **2016 to 2021:**

Increase 229 people (+3%)

Age group with the greatest increase of people from **2016 to 2021:**

70–74 years 167 people (+55%)

In 2021

Assistance needed due to a disability:
359 people (5%)

Care provided to a person with a disability, long term illness or old age:
875 people (13%)

Born overseas
2,087 people (27%)

TOP 3 languages other than English spoken at home:

Mandarin 220 (3%)

Greek 141 (2%)

Cantonese 86 (1%)

Households

There were **3,139** households in Patterson Lakes (5% of Kingston's total households)

Median weekly household income \$1,867

Households did not own a vehicle 140 (5%)

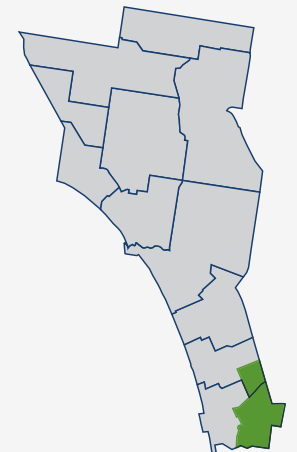
TOP 4 household types:

Couples with children 1,007 (32%)

Couples without children 856 (27%)

Lone person 810 (26%)

One parent family 345 (11%)



PLAY SPACE AND ACTIVE RECREATION FACILITIES

PLAY SPACE CLASSIFICATION

Small Local	Local	Suburb	District	Regional
4	1	-	-	-

PLAY SPACE ACCESS AND DIVERSITY

Playground – Location	Classification	Year of Construction	Level of Inclusive and Accessible Play			Range of Play Activities (age groups)			
			Reasonable	Some	Difficult	Toddler/ Pre-School	Primary School	Senior Primary	Teen / Adult
Adelong Court Reserve	Small Local	2001			✓	✓	✓	✓	
Arrunga Court Reserve	Small Local	1998			✓	✓	✓	✓	✓
Gladesville Boulevard Reserve	Small Local	2018			✓	✓	✓	✓	✓
Harbour District (The Parkway)	Local	2022			✓	✓	✓	✓	
Legana Court Reserve	Small Local	2009			✓	✓	✓	✓	

ACTIVE RECREATION FACILITIES

Location	Asset	Year of Construction	Age
Legana Court Reserve	Basketball Half-Court	1991	32
Gladesville Boulevard Reserve	Futsal Goals	2012	11
Gladesville Boulevard Reserve	AFL Goals	2012	11

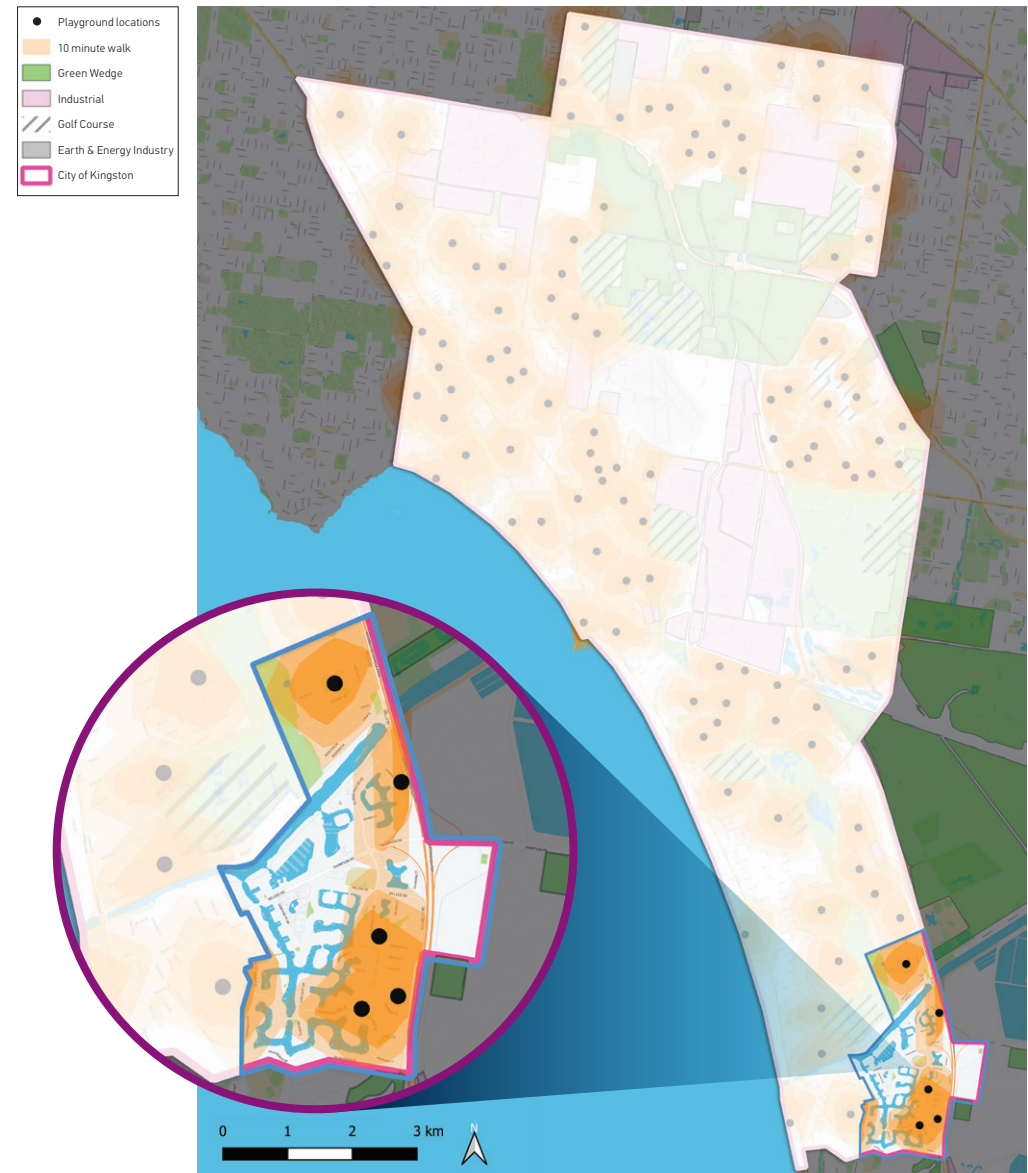
WALKABLE CATCHMENTS – 10 MINUTE WALK

Council’s service level for walkable access to a play space is up to 10-minutes walk from home to a play space for every resident. In 2023, 97% of our residential population can walk ten minutes (approximately 800m) to a play space.

In Patterson Lakes, 73% of the population has access to play within a 10-minute walk from home. This is shown below:

POPULATION WITHIN 10 MINUTE WALK OF A PLAY SPACE

Total Population (2023)	Population within 800m	Percentage of population
7,982	5,827	73%



PLAYGROUND GAP ANALYSIS

The application of the general planning provision of one playground per 1,400 residents demonstrates that across 2021 to 2036 (population forecast) there is a deficit playgrounds in Patterson Lakes – refer table below.

Suburb	No. of Play Spaces	Total Suburb Population				Ideal Playground Provision Rate (1:1,400 people)				2021 Deficit/Surplus
		2021	2026	2031	2036	2021	2026	2031	2036	
Patterson Lakes	5	7,856	8,073	8,128	8,221	5.6	5.8	5.8	5.9	-0.6



ISSUES AND OPPORTUNITIES



Issues and opportunities



- » 73% of the population has access to play opportunities within a 10-minute walk from home. Catchment planning for this suburb is difficult as a result of its 'lakes' system. This also creates accessibility issues with the populations access to open space.
- » Supply and access within the west section of the suburb is poor; an additional playground is forecast as currently being required based on population vs supply numbers. This demand will not change over the coming 15 years however, the 2010 Playground Strategy recommended the removal of Arrunga Court Reserve playground (as its location is not suitable for play and the location is serviced well by Gladesville Boulevard Playground but is valuable open space).
- » Should an additional playground be created in Patterson Lakes, it should be provided in the west section of the suburb. Options to access alternate play spaces may be available via partnerships with other land managers such as Melbourne Water and Parks Victoria.
- » Accessible play options are poor, and teen play is provided at only 40% of playgrounds.
- » Consider the role of the Open Space Strategy to secure additional open space or partnerships for play/active recreation purposes.

STRATEGIC INTENTIONS... WHAT ARE WE GOING TO DO?



Strategic Intentions

- » A more extensive review of provision is required in Patterson Lakes to determine catchment overlaps and future provision at all existing sites. This will also assist to better identify the preferred location for any additional play spaces that may be required.
- » Reclassify and improve quantity and diversity of play options and include active recreation facilities at the Gladesville Boulevard Playground.
- » In consultation with the local community, broaden the play options at Harbourtown Playground to include active recreation facilities so that the play space caters to a far broader range of users, particularly teens. Embellish this facility to Local Level play space classification. Space is available adjacent to the new playground and should be allocated for this type of use. Low impact options such as ninja warrior, large social swings and basketball options utilising noise attenuating surfaces should be considered in this location.

