

PLAYGROUND SUBURB ANALYSIS

ACTIVE KINGSTON



City of
KINGSTON

HIGHETT



WHO LIVES HERE...

2023 Playgrounds

There are **2 playgrounds** and **5 active recreation facilities**.

2023 Population

4,243 people are estimated to live in Highett in 2023 (3% of the Kingston population)

Population change

Forecast change from **2023 to 2038:**

Estimated increase 5,323 people (+126%)

Population change from **2016 to 2021:**

Increase 597 people (+17%)

Age group with the greatest increase of people from **2016 to 2021:**

25–29 years 85 people (+37%)

In 2021

Assistance needed due to a disability:
219 people (5%)

Care provided to a person with a disability, long term illness or old age:
432 people (13%)

Born overseas
1,388 people (34%)

TOP 3 languages other than English spoken at home:

Mandarin 148 (4%)
Greek 109 (3%)
Russian 83 (2%)

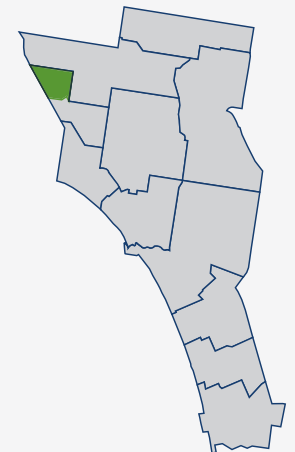
Households

There were **1,882** households in Highett (3% of Kingston's total households)

Median weekly household income \$1,866
Households did not own a vehicle 119 (6%)

TOP 4 household types:

Lone person 627 (33%)
Couples without children 517 (28%)
Couples with children 442 (24%)
One parent family 157 (8%)



PLAY SPACE AND ACTIVE RECREATION FACILITIES

PLAY SPACE CLASSIFICATION

Small Local	Local	Suburb	District	Regional
-	-	1	1	-

PLAY SPACE ACCESS AND DIVERSITY

Playground – Location	Classification	Year of Construction	Level of Inclusive and Accessible Play			Range of Play Activities (age groups)			
			Reasonable	Some	Difficult	Toddler/ Pre-School	Primary School	Senior Primary	Teen / Adult
Highbett Reserve	Suburb	2010			✓	✓	✓	✓	✓
Sir William Fry Reserve	District	2005		✓		✓	✓	✓	

ACTIVE RECREATION FACILITIES

Location	Asset	Year of Construction	Age
Sir William Fry Reserve Playground	Rebound Wall	1990	33
Sir William Fry Reserve Playground	Skate Park	2005	18
Sir William Fry Reserve Playground	Basketball Half-Court	2005	18
Highbett Reserve Playground	Basketball Half-Court	2010	13
Highbett Reserve Playground	Cricket Nets	2022	1

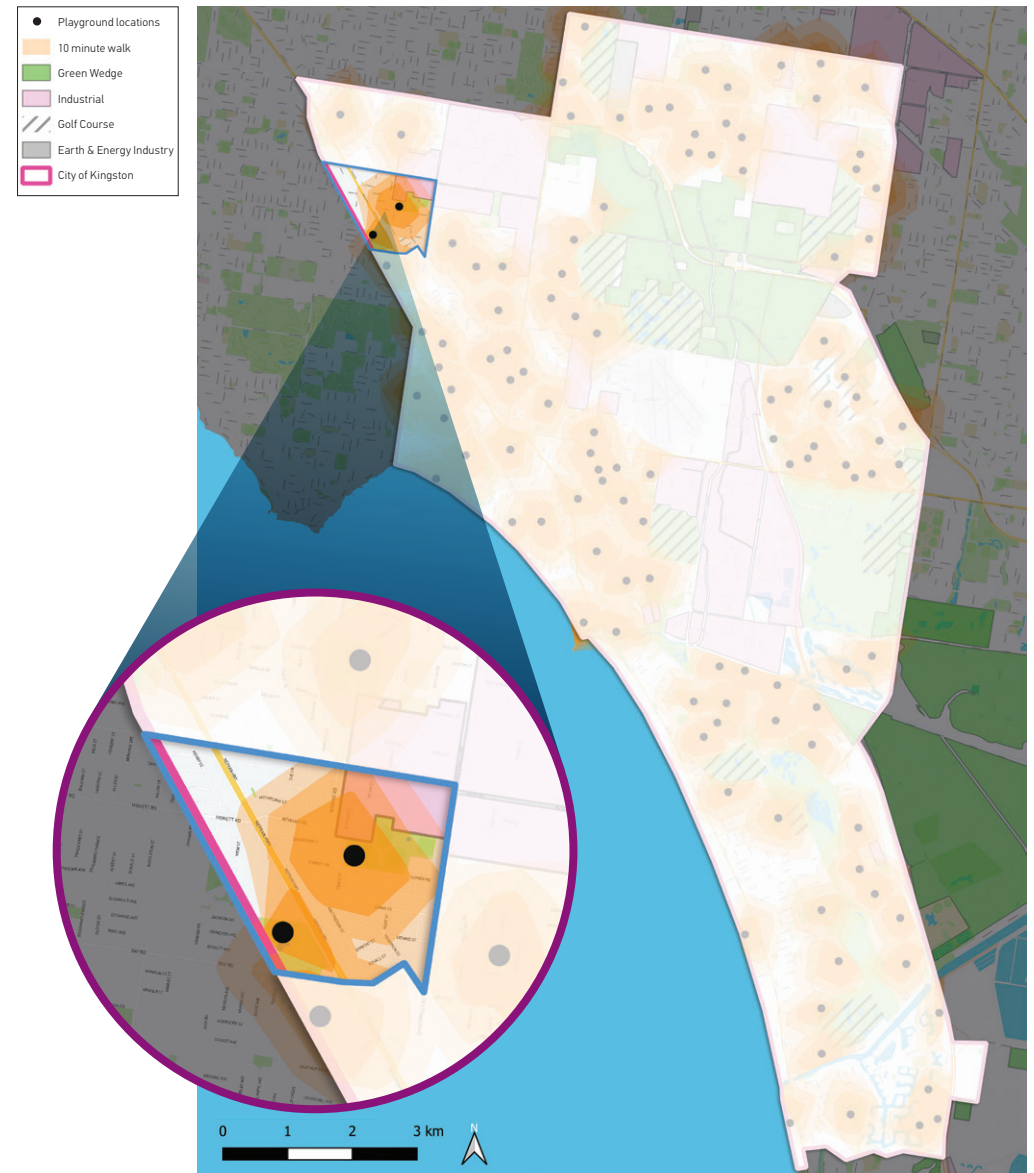
WALKABLE CATCHMENTS – 10 MINUTE WALK

Council’s service level for walkable access to a play space is up to 10-minutes walk from home to a play space for every resident. In 2023, 97% of our residential population can walk ten minutes (approximately 800m) to a play space.

In Highett, 86% of the population has access to play within a 10-minute walk from home. This is shown below:

POPULATION WITHIN 10 MINUTE WALK OF A PLAY SPACE

Total Population (2023)	Population within 800m	Percentage of population
4,243	3,649	86%



PLAYGROUND GAP ANALYSIS

The application of the general planning provision of one playground per 1,400 residents demonstrates that across 2021 to 2036 (population forecast) there is a deficit of playgrounds in Highett – refer table below.

Suburb	No. of Play Spaces	Total Suburb Population				Ideal Playground Provision Rate (1:1,400 people)				2021 Deficit/ Surplus
		2021	2026	2031	2036	2021	2026	2031	2036	
Highett	2	4,107	5,322	7,964	9,324	2.9	3.8	5.7	6.7	-0.9



ISSUES AND OPPORTUNITIES



Issues and opportunities



- » Whilst 86% of the population in Highett (within Kingston) are within 10-minutes walk of a play space, population projections suggest an additional five play spaces will be required in Highett to service future populations (forecast for 2036), which is a significant increase. Additional play facilities should seek to provide further diversity e.g. Suburb, Local and Small Local level playgrounds. There may be opportunity to acquire additional public open space or for the amendment of existing open space functions to provide Local level play, especially where populations within the playground catchment are high (likely to be around residential development sites).
- » The State Government's proposed Suburban Rail Loop (SRL) project will significantly impact demand for play provision in Highett and its surrounds. Sir William Fry Reserve in Highett is expected to experience a loss of 40% of its existing open space functionality due to the development of a new station. Whilst the play space will be retained, usage and amenity will be impacted for many years during construction (expected from 2025/26). Negotiations with SRL continue regarding the replacement and improvement of play infrastructure.
- » Catchment mapping can assist to identify superior locations which will yield most additional access for residents in areas of deficit. The former Highett Kindergarten site would address the known area of open space shortfall in Highett. The proposed elevated rail south of Highett Station will also provide new access opportunities to open space and the potential location/s for play facilities. There are also play facilities located within Bayside City Council that will be accessible to Kingston residents following level crossing works.
- » Demand for access to active recreation and outdoor fitness equipment will increase in Highett as the population increases - significant growth in number of 0-12 year olds and 22-45 year olds (i.e. young families). Forecasts indicate significant change by 2031 and then a further doubling by 2036.
- » To match forecast population growth, consider the role of the 2023 Open Space Strategy in securing additional public space for provision of play spaces or amendment of open space function of existing spaces to enable an increase in provision for play. Also consider the use of alternate urban spaces for play provision and use of Council's planning controls to achieve this outcome.

STRATEGIC INTENTIONS... WHAT ARE WE GOING TO DO?



Strategic Intentions

- » As a high priority, a review of the existing play space catchments should be undertaken and a plan for suitable siting of play and active recreation facilities determined for the suburb. This may involve securing access to additional open space or partnerships for play purposes. Council's Open Space Strategy identifies that some residents in Highett are without access to open space within 400m of home. Any acquisition of land for play should be pursued as part of Council's Open Space Strategy's intentions for broader open space requirements/functions.
- » Highett Level Crossing Removal Project (LXRP) – ensure advocacy opportunities are implemented to influence the outcomes of any play opportunities created via the removal of the level crossing at Highett Road and elevated rail proposal. Early assessment suggests the requirement for an active recreation focused play space (Suburb level) with a focus on teens (this is the highest cohort of population growth).
- » Seek for improved residential access to the two play spaces on the Bayside City Council side of rail reserve, as Highett lacks smaller scale play opportunities for young children that is close to homes. Achieving access to these types of play spaces in neighbouring Bayside City Council would be of much benefit to Highett residents.
- » Continue to review the option to include a Small Local or Local play space at the former Highett Pre-School site (on Station Street) and establish connectivity between new open space gained across the broader LXRP area, including retail, transport and residential users.
- » Enhance the play space at Sir William Fry Reserve and ensure it is provided as a District level play space (in conjunction with proposed active recreation improvements, as part of SRL project).
- » Work with the SRLA to replace and improve the skate facilities and half court space at Sir William Fry Reserve, preferably consistent with Council and the community's vision for the site.
- » Ensure any future populations in and around the SRL site, including the adjacent Gasworks site have adequate access to play and active recreation opportunities, within a 10-minute walk from home.
- » Reclassify the existing play space at Highett Reserve as a Suburb level play space and in doing so, seek to diversify active recreation and play options for residents of Highett on the east side of the Nepean Highway. This reserve is the only sporting reserve available for the Highett suburb and spatially it offers a range of options for inclusion of other activities. This includes additional, and more demographically relevant active recreation facilities such as circuit walking paths and modern, functional fitness equipment.