

PLAYGROUND SUBURB ANALYSIS

ACTIVE KINGSTON



City of
KINGSTON

HEATHERTON



WHO LIVES HERE...

2023 Playgrounds

There are **3 playgrounds** and **1 active recreation facilities**.

2023 Population

2,583 people are estimated to live in Heatherton in 2023 (2% of the Kingston population)

Population change

Forecast change from **2023 to 2038:**

Estimated increase 100 people (+4%)

Population change from **2016 to 2021:**

Decrease 81 people (-3%)

Age group with the greatest increase of people from **2016 to 2021:**

50–54 years 68 people (+35%)

In 2021

Assistance needed due to a disability:
111 people (4%)

Care provided to a person with a disability, long term illness or old age:
261 people (12%)

Born overseas
1,057 people (37%)

TOP 3 languages other than English spoken at home:

Mandarin 121 (4%)

Russian 104 (4%)

Greek 86 (3%)

Households

There were **987** households in Heatherton (2% of Kingston's total households)

Median weekly household income \$2,104

Households did not own a vehicle 33 (3%)

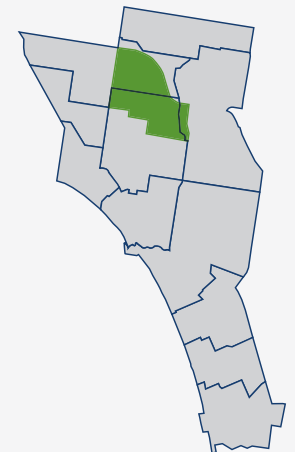
TOP 4 household types:

Couples with children 418 (42%)

Couples without children 203 (21%)

Lone person 195 (20%)

One parent family 107 (11%)



PLAY SPACE FACILITIES

PLAY SPACE CLASSIFICATION

Small Local	Local	Suburb	District	Regional
1	2	-	-	-

PLAY SPACE ACCESS AND DIVERSITY

Playground – Location	Classification	Year of Construction	Level of Inclusive and Accessible Play			Range of Play Activities (age groups)			
			Reasonable	Some	Difficult	Toddler/ Pre-School	Primary School	Senior Primary	Teen / Adult
Henry Street Reserve	Small Local	1970			✓	✓	✓	✓	✓
St Georges Crescent Reserve	Local	2005			✓	✓	✓	✓	✓
The Heath Common	Local	2023	✓			✓	✓	✓	✓

ACTIVE RECREATION FACILITIES

Location	Asset	Year of Construction	Age
Heatherton Recreation Reserve	Cricket Nets	2021	2

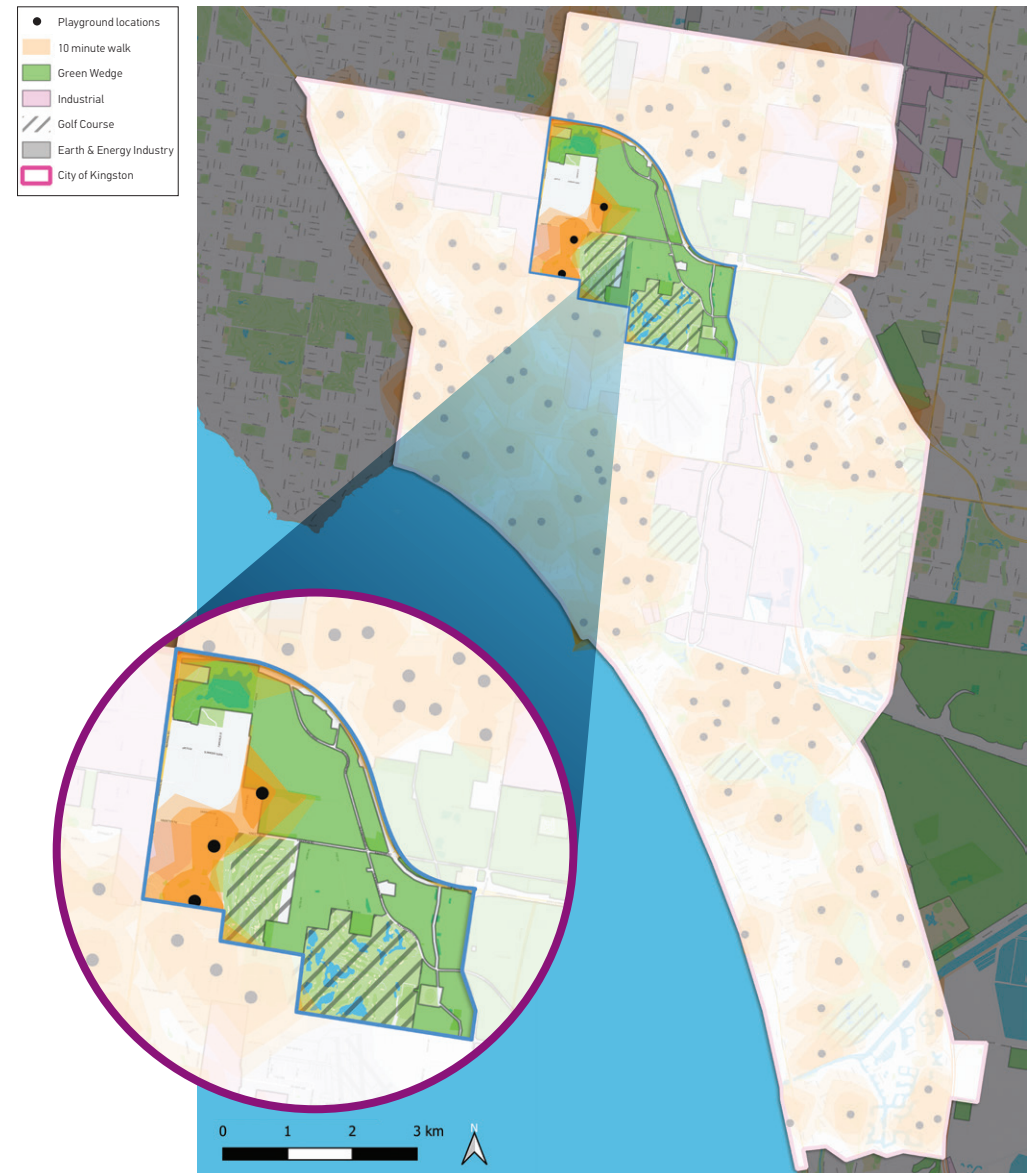
WALKABLE CATCHMENTS – 10 MINUTE WALK

Council’s service level for walkable access to a play space is up to 10-minutes walk from home to a play space for every resident. In 2023, 97% of our residential population can walk ten minutes (approximately 800m) to a play space.

In Heatherton, 88% of the population has access to play within a 10-minute walk from home. This is shown below:

POPULATION WITHIN 10 MINUTE WALK OF A PLAY SPACE

Total Population (2023)	Population within 800m	Percentage of population
2,583	2,273	88%



PLAYGROUND GAP ANALYSIS

The application of the general planning provision of one playground per 1,400 residents demonstrates that across 2021 to 2036 (population forecast) there is a surplus of playgrounds in Heatherton – refer table below.

Suburb	No. of Play Spaces	Total Suburb Population				Ideal Playground Provision Rate (1:1,400 people)				2021 Deficit/Surplus
		2021	2026	2031	2036	2021	2026	2031	2036	
Heatherton	3	2,856	2,820	2,846	2,903	2.0	2.0	2.0	2.1	1.0



ISSUES AND OPPORTUNITIES



Issues and opportunities



- » Heatherton is home to Council's oldest playground at Henry Street Reserve – it is made from galvanised steel and is over 50 years old!
- » Council has an opportunity to advocate to State Government for the replacement of play spaces impacted by the Suburban Rail Loop (SRL) project, including the Henry Street play space and any future opportunities within the creation of the Chain of Parks.
- » Council should review suitability of the Henry Street play space based on any proposals to change land use in this location. Opportunity may exist to increase the size of the existing space and therefore an expansion of the play space may be warranted, but only if surrounding land use attracts people to the area as an open space 'destination'.
- » Consider the role of the 2023 Open Space Strategy in securing additional public space for provision of play spaces, or amendment of open space function of existing spaces.
- » The Heath Estate Common Playground was recently upgraded in 2023 and has been well supported by young children living in the Heath Estate.
- » Population projections suggest supply of playgrounds in Heatherton is adequate now and for future populations.



STRATEGIC INTENTIONS... WHAT ARE WE GOING TO DO?



Strategic Intentions

- » Renew and upgrade the St George's Crescent Reserve play space consistent with its Local play space classification and broaden the play offering to include additional active recreation options including basketball and outdoor fitness equipment for the local community.
- » Continue to review the future of Henry Street play space (in line with proposed SRL project) and in the meantime consider the inclusion of Fixed Term play opportunities to better service this local catchment's play needs.

