

PLAYGROUND SUBURB ANALYSIS

ACTIVEKINGSTON



City of
KINGSTON

CHELSEA HEIGHTS



WHO LIVES HERE...

2023 Playgrounds

There are **4 playgrounds** and **2 active recreation facilities**.

2023 Population

5,466 people are estimated to live in Chelsea Heights in 2023 (3% of the Kingston population)

Population change

Forecast change from **2023 to 2038:**

Estimated increase 432 people (+8%)

Population change from **2016 to 2021:**

Increase 56 people (+1%)

Age group with the greatest increase of people from **2016 to 2021:**

5-9 years 64 people (+19%)

In 2021

Assistance needed due to a disability:
278 people (5%)

Care provided to a person with a disability, long term illness or old age:
613 people (14%)

Born overseas
1,355 people (25%)

TOP 3 languages other than English spoken at home:

Greek 105 (2%)

Mandarin 88 (2%)

Russian 58 (1%)

Households

There were **2,037** households in Chelsea Heights (3% of Kingston's total households)

Median weekly household income \$1,866

Households did not own a vehicle 75 (4%)

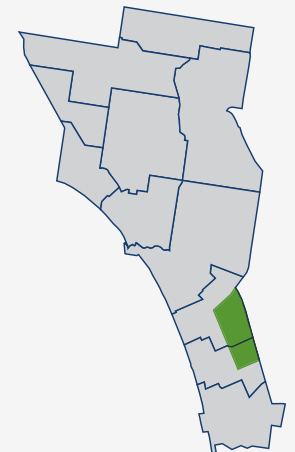
TOP 4 household types:

Couples with children 781 (38%)

Lone person 467 (23%)

Couples without children 460 (23%)

One parent family 232 (11%)



PLAY SPACE AND ACTIVE RECREATION FACILITIES

PLAY SPACE CLASSIFICATION

Small Local	Local	Suburb	District	Regional
1	3	-	-	-

PLAY SPACE ACCESS AND DIVERSITY

Playground – Location	Classification	Year of Construction	Level of Inclusive and Accessible Play			Range of Play Activities (age groups)			
			Reasonable	Some	Difficult	Toddler/ Pre-School	Primary School	Senior Primary	Teen / Adult
Amaroo Drive Reserve	Local	2021			✓	✓	✓	✓	✓
Heights Park	Local	1989			✓	✓	✓	✓	✓
Talab Reserve	Local	2017			✓	✓	✓	✓	✓
Third Avenue Reserve	Small Local	2017			✓	✓	✓		✓

ACTIVE RECREATION FACILITIES

Location	Asset	Year of Construction	Age
Heights Park	Rebound Wall	1989	34
Beazley Reserve	Cricket Nets	2006	17

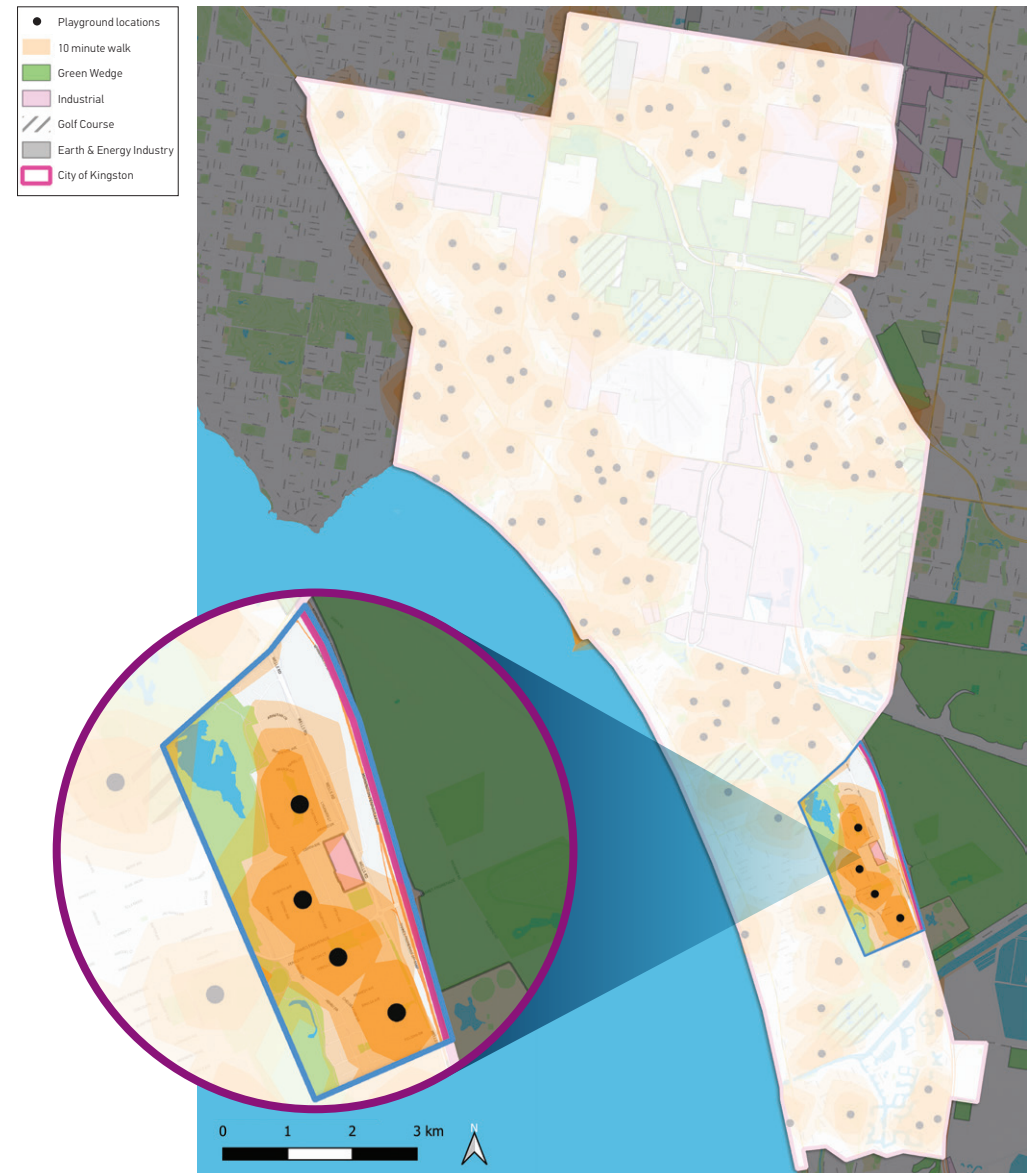
WALKABLE CATCHMENTS – 10 MINUTE WALK

Council’s service level for walkable access to a play space is up to 10-minutes walk from home to a play space for every resident. In 2023, 97% of our residential population can walk ten minutes (approximately 800m) to a play space.

In Chelsea Heights, 93% of the population has access to play within a 10-minute walk from home. This is shown below:

POPULATION WITHIN 10 MINUTE WALK OF A PLAY SPACE

Total Population (2023)	Population within 800m	Percentage of population
5,466	5,083	93%



PLAYGROUND GAP ANALYSIS

The application of the general planning provision of one playground per 1,400 residents demonstrates that across 2021 to 2036 (population forecast) supply of playgrounds in Chelsea Heights is adequate – refer table below.

Suburb	No. of Play Spaces	Total Suburb Population				Ideal Playground Provision Rate (1:1,400 people)				2021 Deficit/Surplus
		2021	2026	2031	2036	2021	2026	2031	2036	
Chelsea Heights	4	5,428	5,618	5,803	5,878	3.9	4.0	4.1	4.2	0.1



ISSUES AND OPPORTUNITIES



Issues and opportunities



- » The current provision of only Small Local and Local level playgrounds limits the community's access to play opportunities provided in other suburbs within the City.
- » 93% of the residential population in Chelsea Heights has access to play within a 10-minute walk from home and the supply is consistent with population provision ratios.
- » Heights Park Playground is located on Department of Education land, and Council is working toward the development of a future Local level play space with active recreation facilities. All other playgrounds in Chelsea Heights have been upgraded/renewed over the past five years.



STRATEGIC INTENTIONS... WHAT ARE WE GOING TO DO?



Strategic Intentions

- » Continue the planning, design and delivery processes for improved play facilities at Heights Park.
- » Seek to provide a Suburb level play space within Chelsea Heights, potentially at a central location such as Heights Park.
- » Diversify active recreation and physical activity options to include outdoor fitness equipment, and multi-use courts including basketball and netball activities.

