

PLAYGROUND SUBURB ANALYSIS

ACTIVE KINGSTON



CARRUM



Carrum Foreshore Playground

WHO LIVES HERE...

2023 Playgrounds

There are **2 playgrounds** and **5 active recreation facilities**.

2023 Population

4,484 people are estimated to live in Carrum in 2023 (3% of the Kingston population)

Population change

Forecast change from **2023 to 2038:**

Estimated increase 884 people (+20%)

Population change from **2016 to 2021:**

Increase 254 people (+6%)

Age group with the greatest increase of people from **2016 to 2021:**

0–4 years 70 people (+27%)

In 2021

Assistance needed due to a disability:
214 people (5%)

Care provided to a person with a disability, long term illness or old age:
482 people (14%)

Born overseas
903 people (21%)

TOP 3 languages other than English spoken at home:

Greek 63 (2%)

Mandarin 39 (1%)

Russian 39 (1%)

Households

There were **1,858** households in Carrum (3% of Kingston's total households)

Median weekly household income \$1,679

Households did not own a vehicle 148 (8%)

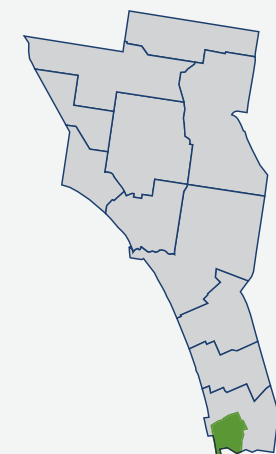
TOP 4 household types:

Lone person 579 (31%)

Couples with children 457 (25%)

Couples without children 447 (24%)

One parent family 240 (13%)



PLAY SPACE AND ACTIVE RECREATION FACILITIES

PLAY SPACE CLASSIFICATION

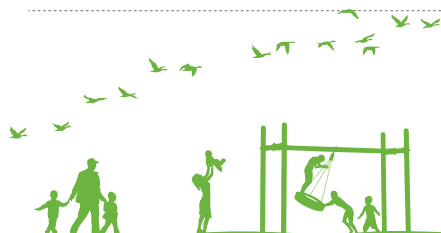
Small Local	Local	Suburb	District	Regional
-	-	-	2	-

PLAY SPACE ACCESS AND DIVERSITY

Playground – Location	Classification	Year of Construction	Level of Inclusive and Accessible Play			Range of Play Activities (age groups)			
			Reasonable	Some	Difficult	Toddler/ Pre-School	Primary School	Senior Primary	Teen / Adult
Carrum Foreshore Park	District	2013		✓		✓	✓	✓	
Carrum Roy Dore Reserve	District	2011		✓		✓	✓	✓	✓

ACTIVE RECREATION FACILITIES

Location	Asset	Year of Construction	Age
Carrum Roy Dore Reserve	Rebound Wall	1995	28
Carrum Roy Dore Reserve	Outdoor Fitness Equipment	2012	11
Carrum Roy Dore Reserve	Cricket Nets	2018	5
Carrum Railway (Station) Reserve	Outdoor Fitness Equipment	2019	4
Carrum Railway (Station) Reserve	Basketball Half-Court	2019	4



WALKABLE CATCHMENTS – 10 MINUTE WALK

Council’s service level for walkable access to a play space is up to 10-minutes walk from home to a play space for every resident. In 2023, 97% of our residential population can walk ten minutes (approximately 800m) to a play space.

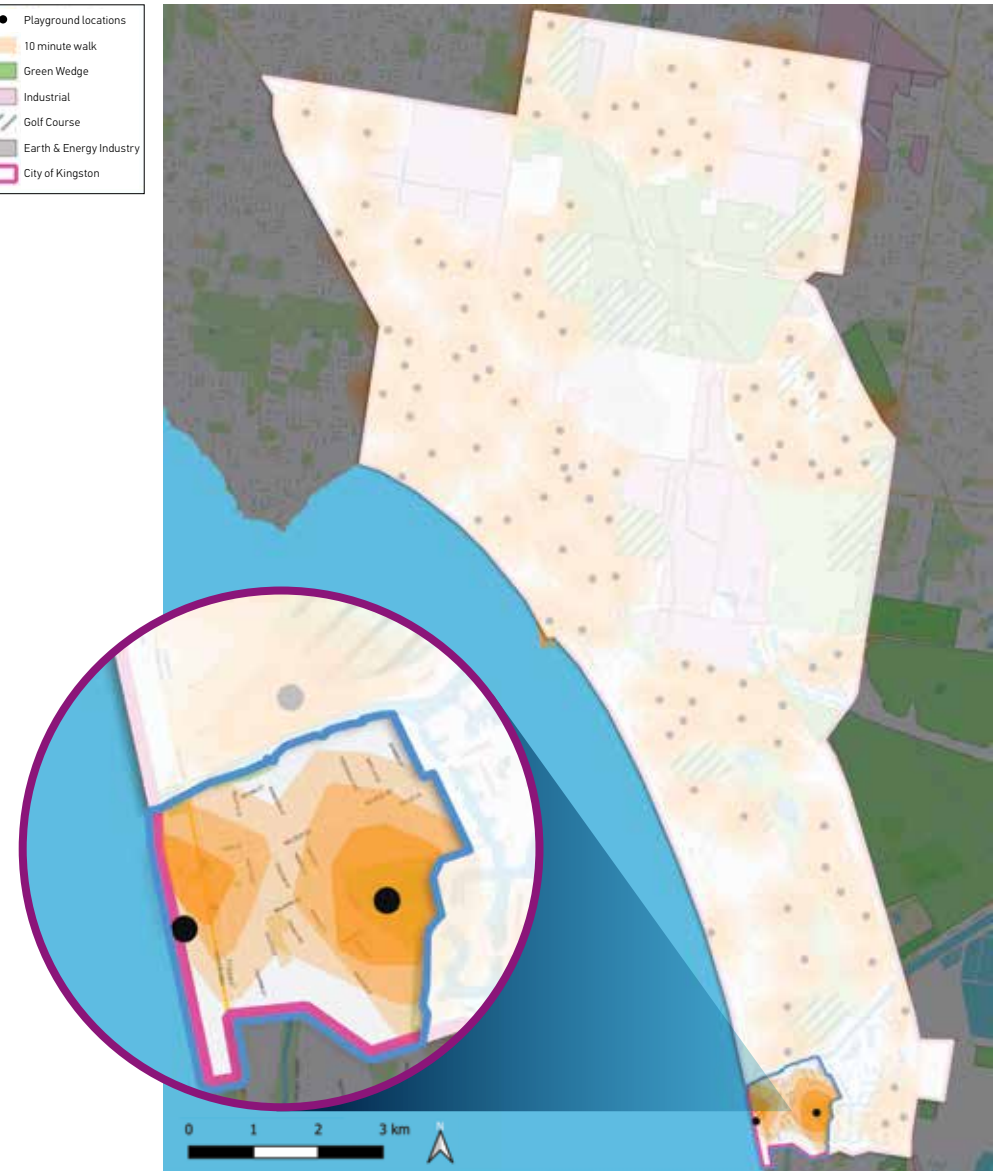
In Carrum, 82% of the population has access to play within a 10-minute walk from home. This is shown below:

POPULATION WITHIN 10 MINUTE WALK OF A PLAY SPACE

Total Population (2023)	Population within 800m	Percentage of population
4,484	3,677	82%



- Playground locations
- 10 minute walk
- Green Wedge
- Industrial
- Golf Course
- Earth & Energy Industry
- City of Kingston



PLAYGROUND GAP ANALYSIS

The application of the general planning provision of one playground per 1,400 residents demonstrates that across 2021 to 2036 (population forecast) that there is a deficit – refer table below.

Suburb	No. of Play Spaces	Total Suburb Population				Ideal Playground Provision Rate (1:1,400 people)				2021 Deficit/Surplus
		2021	2026	2031	2036	2021	2026	2031	2036	
Carrum	2	4,259	4,677	4,953	5,250	3.0	3.3	3.5	3.8	-1.0



ISSUES AND OPPORTUNITIES



Issues and opportunities



- » The area lacks Small Local and Local level playgrounds, both of which are considered the most important for childhood development and accessible physical activity options close by to home. There may be opportunity to pursue use of additional open space or amendment of existing open space functions to provide local level play, especially where populations within the playground catchment are high (likely to be around residential development sites and new train station area).
- » Active recreation opportunities were increased in Carrum recently via the State Government's Level Crossing Removal Project.
- » Population projections suggest an additional playground is required in Carrum to service current populations. It is noted that the suburb has access to a playground that sits within Keast Park, an adjoining park located within the City of Frankston.
- » 82% of the population in Carrum are within a 10-minute walk of a playground. The playgrounds here are a District classification – both of which have an industry accepted 5km drive time catchment. They are located in spaces which attract usage from a far broader catchment than just the suburb – one is on the foreshore and the other a large recreation reserve.
- » Anecdotally, it is known and observed that bike usage for recreation and travel purposes (by young people) is popular in Carrum. Young people also have interest in social recreation opportunities in open space.
- » Consider the role of the 2023 Open Space Strategy in securing additional public space for provision of playgrounds, or amendment/expansion of open space function of existing spaces, and review options to use alternate urban spaces for play provision. And use of the planning scheme to compel others to provide for play in this location. Council could consider planning controls for large-scale residential developments to assist in providing further provision for play.

STRATEGIC INTENTIONS... WHAT ARE WE GOING TO DO?



Strategic Intentions

- » Amend the classification of play at Roy Dore Reserve to become a Suburb classification play space – the intention of this play space is to provide social gathering options, physical activities and play in a centralised location for all residents. Siting within a recreation reserve provides access to car parking, toilets, shade and BBQ/picnic facilities which enable greater length of stay and enhanced community/family/friendship connection opportunities for locals, including teens.
- » Secure a location within the suburb (or close by with good access), for mountain biking/BMX/informal jumps ideally along an existing trail network or at a large reserve, (e.g. Long Beach or Patterson River trail or McDougall's/Roy Dore Reserves).
- » Plan for the renewal of the Carrum Foreshore play space – its location on the foreshore means its asset life is nearing expiry. Include options for broader range of young people.
- » Continue to invest in active recreation facilities to encourage the community's involvement physical activity.

