

# PLAYGROUND SUBURB ANALYSIS

ACTIVEKINGSTON



City of  
KINGSTON

## BONBEACH



Bonbeach Reserve Playground



# WHO LIVES HERE...

## 2023 Playgrounds

There are **3 playgrounds** and **2 active recreation facilities**.

## 2023 Population

**6,988** people are estimated to live in Bonbeach in 2023 (4% of the Kingston population)

## Population change

Forecast change from **2023 to 2038:**

Estimated increase ..... 271 people (+4%)

Population change from **2016 to 2021:**

Increase ..... 438 people (+7%)

**Age group** with the greatest increase of people from **2016 to 2021:**

65–69 years ..... 80 people (+24%)

## In 2021

Assistance needed due to a disability:  
404 people ..... (6%)

Care provided to a person with a disability,  
long term illness or old age:  
757 people ..... (13%)

Born overseas  
1,568 people ..... (23%)

**TOP 3** languages other than English  
spoken at home:

Russian ..... 105 (2%)  
Mandarin ..... 60 (1%)  
Greek ..... 52 (1%)

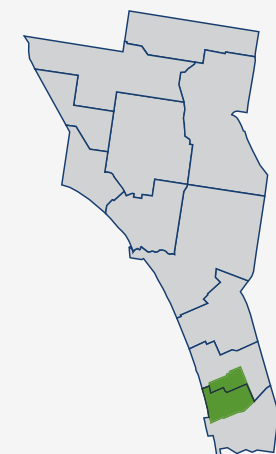
## Households

There were **3,023** households in Bonbeach  
(5% of Kingston's total households)

Median weekly household income ..... \$1,803  
Households did not own a vehicle ..... 167 (6%)

**TOP 4** household types:

Lone person ..... 954 (32%)  
Couples without children ..... 757 (25%)  
Couples with children ..... 753 (25%)  
One parent family ..... 271 (9%)



# PLAY SPACE AND ACTIVE RECREATION FACILITIES

## PLAY SPACE CLASSIFICATION

Small Local	Local	Suburb	District	Regional
2	-	1	-	-

## PLAY SPACE ACCESS AND DIVERSITY

Playground – Location	Classification	Year of Construction	Level of Inclusive and Accessible Play			Range of Play Activities (age groups)			
			Reasonable	Some	Difficult	Toddler/ Pre-School	Primary School	Senior Primary	Teen / Adult
Bonbeach Reserve	Suburb	2019	✓			✓	✓	✓	✓
Mernda Avenue Reserve	Small Local	1998			✓	✓	✓		
Scotch Parade Reserve	Small Local	1994			✓	✓	✓		

## ACTIVE RECREATION FACILITIES

Location	Asset	Year of Construction	Age
Bonbeach Reserve (East)	Cricket Nets	2004	19
Bonbeach Reserve (West)	Cricket Nets	2023	0

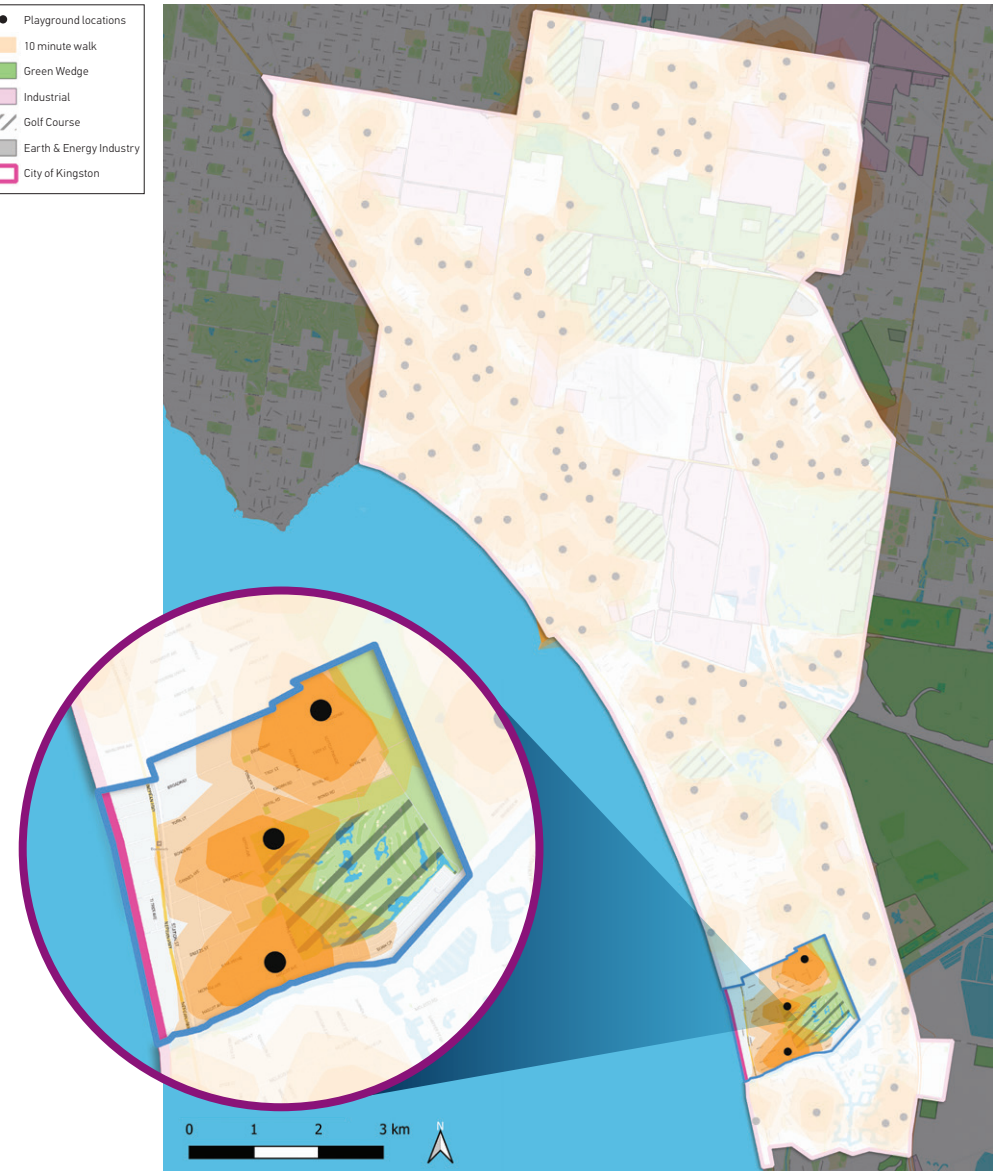
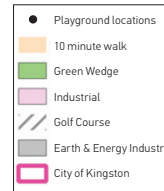
# WALKABLE CATCHMENTS – 10 MINUTE WALK

Council's service level for walkable access to a play space is up to 10-minutes walk from home to a play space for every resident. In 2023, 97% of our residential population can walk ten minutes (approximately 800m) to a play space.

In Bonbeach, 78% of the population has access to play within a 10-minute walk from home. This is shown below:

## POPULATION WITHIN 10 MINUTE WALK OF A PLAY SPACE

Total Population (2023)	Population within 800m	Percentage of population
6,988	5,451	78%





# PLAYGROUND GAP ANALYSIS

The application of the general planning provision of one playground per 1,400 residents demonstrates that across 2021 to 2036 (population forecast) there is a deficit of playgrounds in Bonbeach – refer table below.

Suburb	No. of Play Spaces	Total Suburb Population				Ideal Playground Provision Rate (1:1,400 people)				2021 Deficit/ Surplus
		2021	2026	2031	2036	2021	2026	2031	2036	
Bonbeach	3	6,910	7,044	7,115	7,209	4.9	5.0	5.1	5.1	-1.9





# ISSUES AND OPPORTUNITIES



## Issues and opportunities



- » 78% of the population has access to play opportunities within a 10-minute walk from home.
- » Supply and access within the north-west section of the suburb is poor. Two play spaces in Bonbeach are co-located on South East Water pumping stations and their play value is extremely poor, as is the amenity of these locations.
- » There is a current population-based shortfall of two playgrounds in Bonbeach however, this community has considerable affinity with Bonbeach Reserve (known locally as 'Shark Park'). It is a well-loved play space and sporting location for this community. It also offers accessibility and teen play options. Bonbeach Primary School also affords locals excellent play and open space options outside of school hours.
- » Consider the role of the 2023 Open Space Strategy to secure additional open space or partnerships for play purposes. This should be a priority action within this suburb before any further investment in play and active recreation assets are pursued.



# STRATEGIC INTENTIONS... WHAT ARE WE GOING TO DO?



## Strategic Intentions

- » As a high priority, a review of existing small play spaces (South East Water owned property), should be undertaken and a plan for suitable siting of play determined for the suburb. This may involve securing access to additional open space or partnerships for play purposes in Bonbeach and should seek adequate space to provide a Local level play space ideally in the north-west of the suburb (NB: Council's Open Space Strategy also identifies that residents in the north-west area of Bonbeach are without access to open space within 400m of their home. Any acquisition of land for play should be pursued as part of the Open Space Strategy's intentions for broader open space requirements/functions).
- » Amend the classification of Bonbeach Recreation Reserve to a Suburb play space, and uplift/diversify as necessary in line with Suburb play space classification. Of benefit here would be a multi-use court (to include basketball), informal biking options along the existing path network and ninja warrior/outdoor fitness equipment options.

