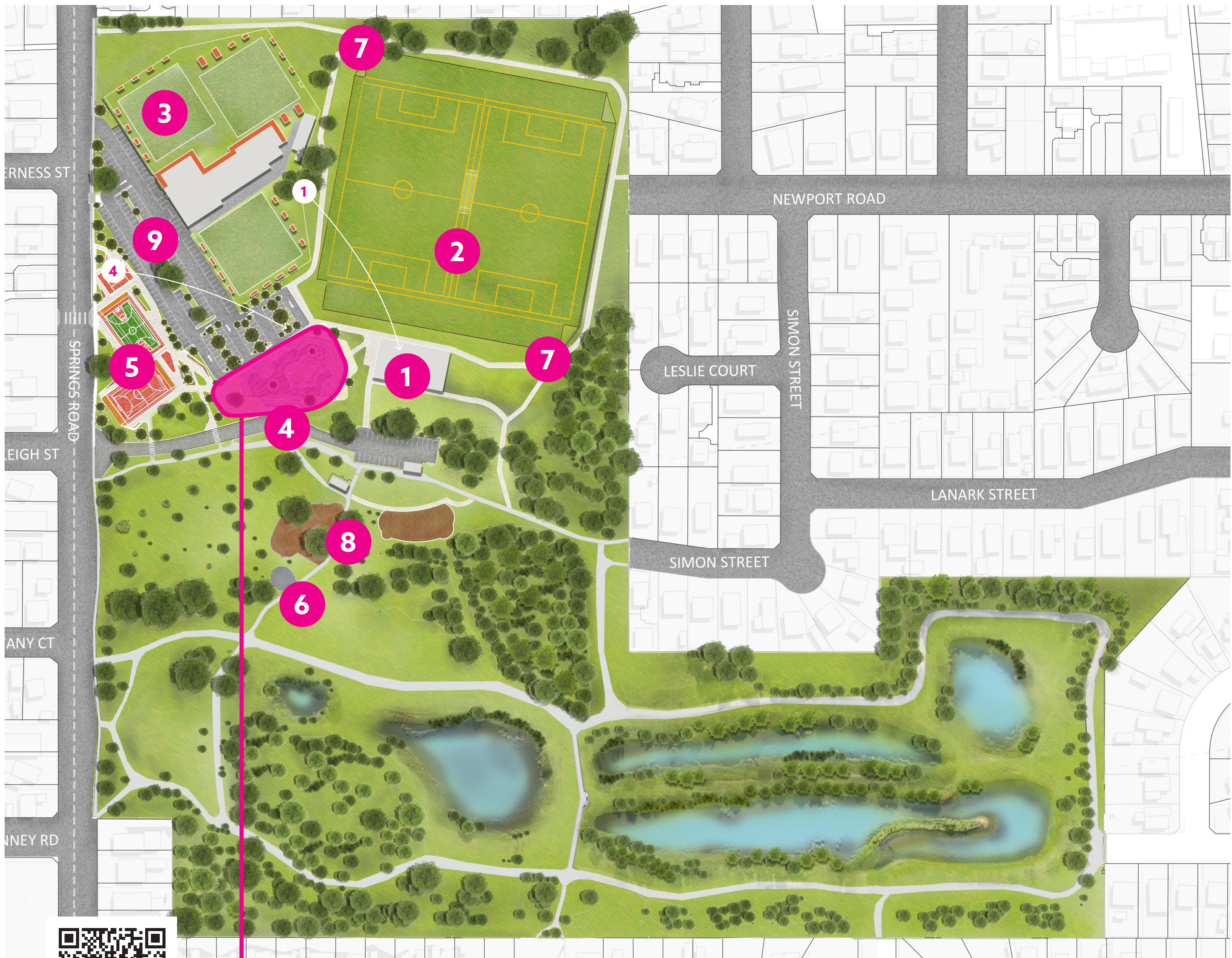


# CHANGES TO: NAMATJIRA PARK MASTER PLAN

YOUR KINGSTON  
YOUR SAY



- 1 New sports pavilion**  
New location proposed at the southern end of the sports field. Relocated to make better use of sports viewing and improved accessibility.
- 2 Upgraded multi-sports fields with new sports lighting**  
New alignment of sports fields including two soccer pitches and a synthetic cricket wicket to cater for multiple sports and future proofing. A turf wicket table and cricket practice nets were originally proposed but are no longer included due to space constraints.
- 3 Covered bowling green**  
This work is being delivered by Bowls Club. These works are underway.
- 4 Skate Park**  
New expanded skate/scooter/BMX facility for all skill levels. Originally proposed near Springs Road, this facility will now be built at the site of the existing skate bowl.
- 5 Active play zone**  
Due to the presence of major underground infrastructure, the original plan for multiple active courts (tennis, basketball/netball, futsal, rebound wall, and skate facilities) has been revised. Now includes 1 x tennis court and 1 x multi-use court (basketball/netball/futsal) and outdoor table tennis.
- 6 Outdoor gym upgrade**  
Following community consultation in early 2025, the outdoor gym will be upgraded in its current location based on community feedback.
- 7 Improved path and trail network**  
Improved lighting to support safer, more accessible movement through the park, inclusive of wayfinding and distance markers.
- 8 Playground**  
To be upgraded and include a new nature play area.
- 9 Traffic and parking improvements**  
Includes expansion of car parking spots available. *Note: Closure of the entrance and car park off Newport Road.*



**Skate Park**  
To view detailed Skate Park plans, scan the QR.

Note: Map is concept only.