

# Wattle Ward

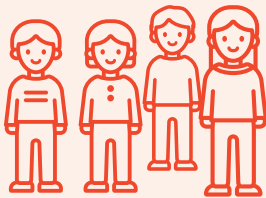
This ward covers much of what was known as “Two Acre Village” at the time of white settlement. The area had a river running along what is now Nepean Highway, and was known for the abundance of Wattle, Red Gum and Yellow Box Gums. Much of the vegetation was cleared by the settlers. The Golden Wattle is Australia’s Floral Emblem.

## People

There were **13,370** people estimated to be living in Wattle in 2021, this makes up 8% of the Kingston population.

Age group with the largest population

**35-39 years** Wattle  
**45-49 years** Kingston



The population in Wattle ward grew at a higher rate to Kingston from 2016 to 2021

**9%** Wattle  
**4%** Kingston

Age group that had the greatest increase of people from 2016 to 2021

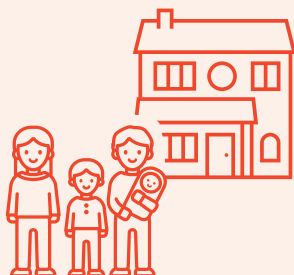
**25-29 years** Wattle  
**70-74 years** Kingston

Wattle has a similar proportion of Aboriginal &/or Torres Strait Islander population to Kingston

**0.5%** Wattle  
**0.5%** Kingston



A similar proportion of residents in Wattle and Kingston only speak English at home



**71%** Wattle  
**71%** Kingston

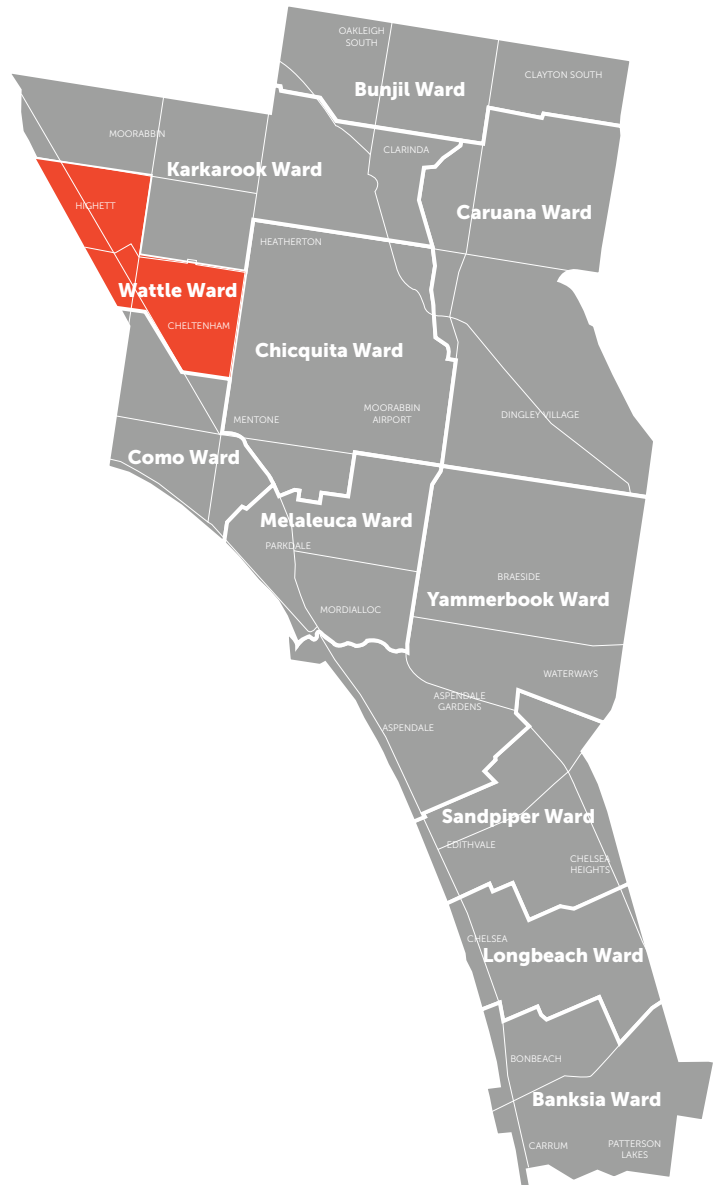
892 people need assistance due to a disability in Wattle

**7%** Wattle  
**6%** Kingston



A similar proportion of people living in Wattle and Kingston were born overseas

**32%** Wattle  
**32%** Kingston



The top 3 overseas languages spoken at home

Wattle	Kingston
Mandarin 4%	Greek 4%
Greek 3%	Mandarin 4%
Russian 2%	Russian 1%



## Education & Employment

### TOP 3 Occupations:

Wattle		Kingston	
Professionals	30%	Professionals	27%
Managers	16%	Managers	15%
Clerical & Admin	14%	Clerical & Admin	14%

### TOP 3 Industries of employment:

Wattle		Kingston	
Health care	14%	Health care	14%
Professional, Scientific & Tech Services	11%	Construction	10%
Retail	9%	Retail	10%

A similar proportion of people are attending university in Wattle and Kingston

**4%**  
Wattle  
**5%**  
Kingston



A higher proportion of people in Wattle have a Bachelor or Higher degree qualification than in Kingston

**36%**  
Wattle  
**31%**  
Kingston



## Connections

A similar proportion of people volunteer in Wattle and Kingston

**12%**  
Wattle  
**12%**  
Kingston



1,369 people provided care to a person with a disability, long term illness or old age in Wattle

**12%**  
Wattle  
**14%**  
Kingston



## Homes

There were **5,647** households in Wattle in 2021, this makes up 9% of total households in Kingston

A higher proportion of households are renting in Wattle than across Kingston

Wattle	
Own / Mortgage	67%
Renting privately	26%
Social housing	2%

Kingston	
Own / Mortgage	70%
Renting privately	23%
Social housing	2%

Households in Wattle earn a similar amount to Kingston

Median weekly household income:

**\$1,866** Wattle

**\$1,867** Kingston

Lone persons make up the largest proportion of households in Wattle

Wattle		Kingston	
Lone person	<b>31%</b>	Lone person	<b>26%</b>
Couples with children	<b>28%</b>	Couples with children	<b>33%</b>
Couples with no children	<b>24%</b>	Couples with no children	<b>24%</b>
One parent family	<b>10%</b>	One parent family	<b>11%</b>



A greater proportion of households don't own a car in Wattle than across Kingston

**7%**  
Wattle  
**6%**  
Kingston



Source of data - Australian Bureau of Statistics, Census of Population and Housing, 2021, Australia.

## Learn more about your local area online

**Community Directory**  
kingston.vic.gov.au/  
community-directory

**What's around me?**  
kingston.vic.gov.au

**Demographic tools**  
kingston.vic.gov.au/demographics