

# Stormwater quality

## IN-LIEU DEVELOPER CONTRIBUTIONS

Kingston Council now offers flexible options for developers to meet stormwater management obligations.

### Developers can now apply to:

- ✓ continue to provide stormwater treatment measures on-site, business as usual **OR**
- ✓ pay a fixed contribution towards Council-managed off-site stormwater projects.

### Benefits include:



- simplifying the approval process



- flexible options for developers



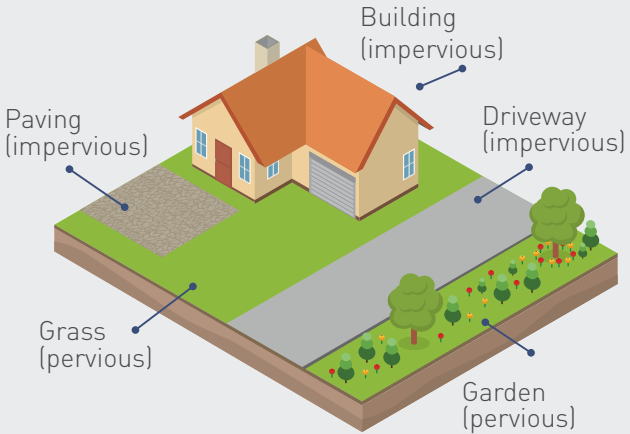
- better environmental outcomes



- cost effective and efficient stormwater management.

## HOW IS IT CALCULATED?

Depending on the area of pervious and impervious surfaces Council will calculate the in lieu stormwater quality contribution. More details can be found on the website.



## WHO IS ELIGIBLE?

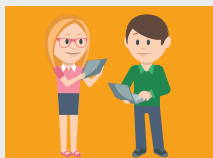
### Medium Scale

- Residential and/or mixed use developments of 3 –to 9 dwellings
- Non-residential developments with a new building gross floor area between 500m<sup>2</sup> and 1,000m<sup>2</sup>

### Large Scale

- Residential and/or mixed use developments of 10 or more dwellings
- Non-residential developments with a new building gross floor area greater than 1,000m<sup>2</sup>

# HOW WILL IT WORK?



Discuss stormwater requirements with Council\*



Applicant decides to pay stormwater quality in-lieu contribution

OR



Applicant decides to meet stormwater quality requirements on-site

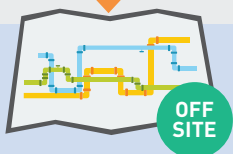
In-lieu contribution calculated and paid for part on-site treatment or full off-site treatment



Applicant submits detailed stormwater quality and quantity designs for approval



Applicant submits detailed stormwater quantity designs for approval



Stormwater quality treatment is constructed by Council off-site. Stormwater quantity treatment is constructed on-site by applicant.



Stormwater quality and quantity treatment is constructed by the applicant on-site.

\*There are no opportunities to make in lieu contributions for stormwater quantity, these requirements must be met on-site.

## HOW WILL THE MONEY BE SPENT?

Stormwater Quality funds will be used to construct 31 identified Council-managed stormwater projects on public land and sporting reserves.

Projects will improve stormwater quality flowing into Port Phillip Bay and irrigate sportsgrounds.

This will be subject to strict financial management and will be reported in Council's annual financial statements in accordance with the Local Government Act 1989.

### Find out more:



[kingston.vic.gov.au/stormwater](http://kingston.vic.gov.au/stormwater)



1300 653 356

This Project has been assisted by the Victorian Government through Melbourne Water Corporation as part of the Living Rivers Stormwater Program

Oct 2018

