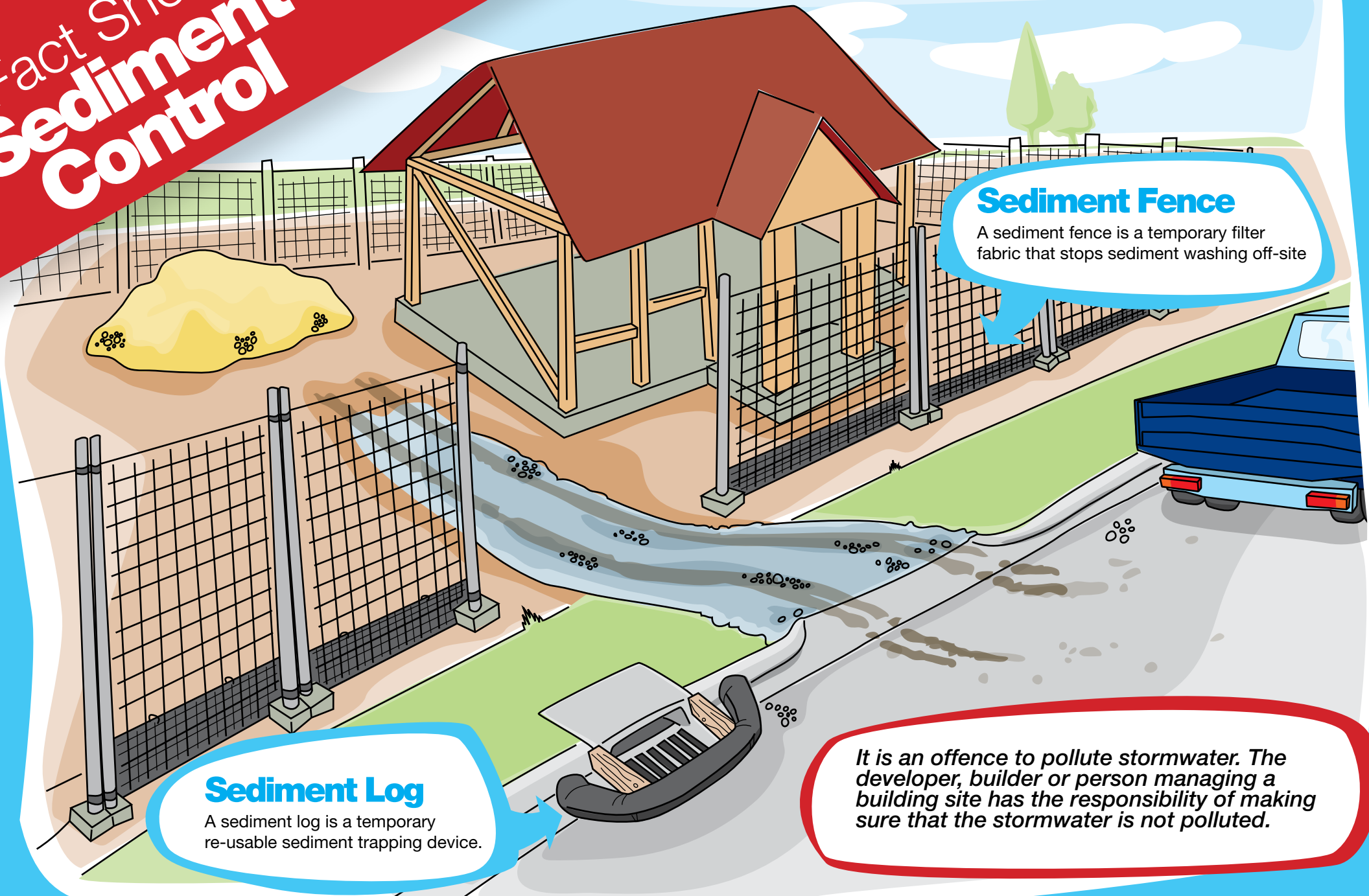


Fact Sheet Sediment Control



Sediment Fence
A sediment fence is a temporary filter fabric that stops sediment washing off-site

Sediment Log
A sediment log is a temporary re-usable sediment trapping device.

It is an offence to pollute stormwater. The developer, builder or person managing a building site has the responsibility of making sure that the stormwater is not polluted.

Sediment Control Products

Sediment Fence

A sediment fence is a temporary sediment barrier made out of synthetic geotextile filter fabric. It can be attached to the inside of the existing site fencing to prevent sediment running off-site. The bottom of the geotextile material is entrenched and it allows water to pass through whilst trapping the sediment.

Should be used on all sites where:

- Soil and vegetation is going to be disturbed.
- Stockpiles are going to be stored on site.
- There is a significant slope to the land.

Sediment Log

A sediment log is a temporary portable sediment trapping device. It should be used when:

- Stockpiles have to be stored off site
- Building works such as concreting and paver cutting is carried out in close proximity to a stormwater pit.
- Mud and soil is being carried off site by trucks.
- Soil is going to run off site and is not going to be filtered by the sediment fence eg. via the crossover.

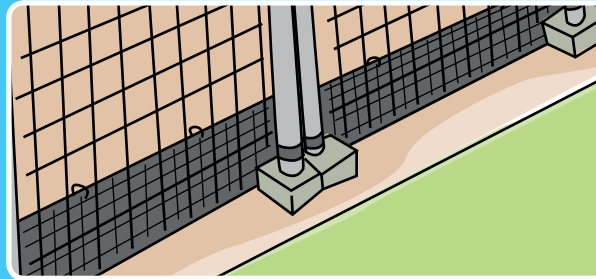
Protecting the environment:

Sediment entering our stormwater system pollutes our creeks, rivers, beaches and bays. Sediment makes stream and river water cloudy which can destroy the habitats of fish and aquatic life. It can also cause blockages to the stormwater pipes increasing the chance of flooding.

How to install these products:

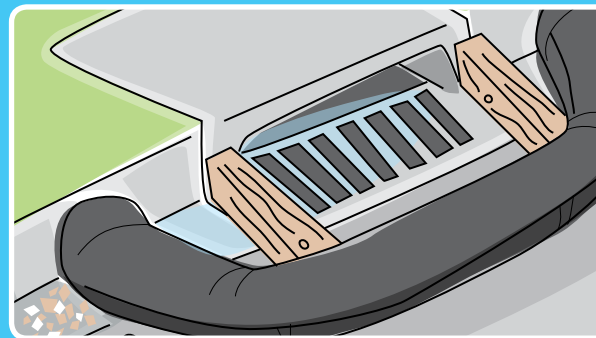
Sediment Fence

- a Identify the low sides of site
- b Dig a trench along the low sides, inside the temporary site fencing.
- c Attach geotextile fabric along the inside of the temporary fence.
- d Fill the trench and bury the bottom of geotextile in the trench.



Sediment Log

- a Make or purchase sediment log
- b Put the gravel log across the opening of the inlet pit. Make sure the log is tight with the kerbing on both sides of the inlet pit.
- c Leave a 100mm gap between the front of the pit and the log and it should extend beyond the grate. Use wooden blocks to keep the 100mm gap stable.
- d Clean out and around the sediment log regularly. DO NOT hose down built up soil and sand down the drain.



Benefits of using these products:

- Traps sediment before it runs into the stormwater drains
- Keeps creeks and bays clean
- Products are re-useable on other sites
- The site has fewer hazards
- The building site looks presentable and attracts customers
- Avoid council penalties.

Suppliers contact details:

Geofabrics Australasia Pty Ltd

140 Bernard St, Cheltenham
(03) 8586 9100
www.geofabrics.com.au

Statewide River and Stream Management

293 South Gippsland Highway, Hampton Park
(03) 9702 9757
www.stateplanthire.com

Southern Geosynthetics Supplies

90 Church Road, Pantom Hill
(03) 9719 7969
www.geosynthetics.com.au

Treemax

570 South Gippsland Highway, Lynbrook
(03) 8787 4111
www.treemax.com.au

For further information contact:

Claire McGoldrick
Stormwater Protection Officer
City Of Kingston
(03) 9581 4799

