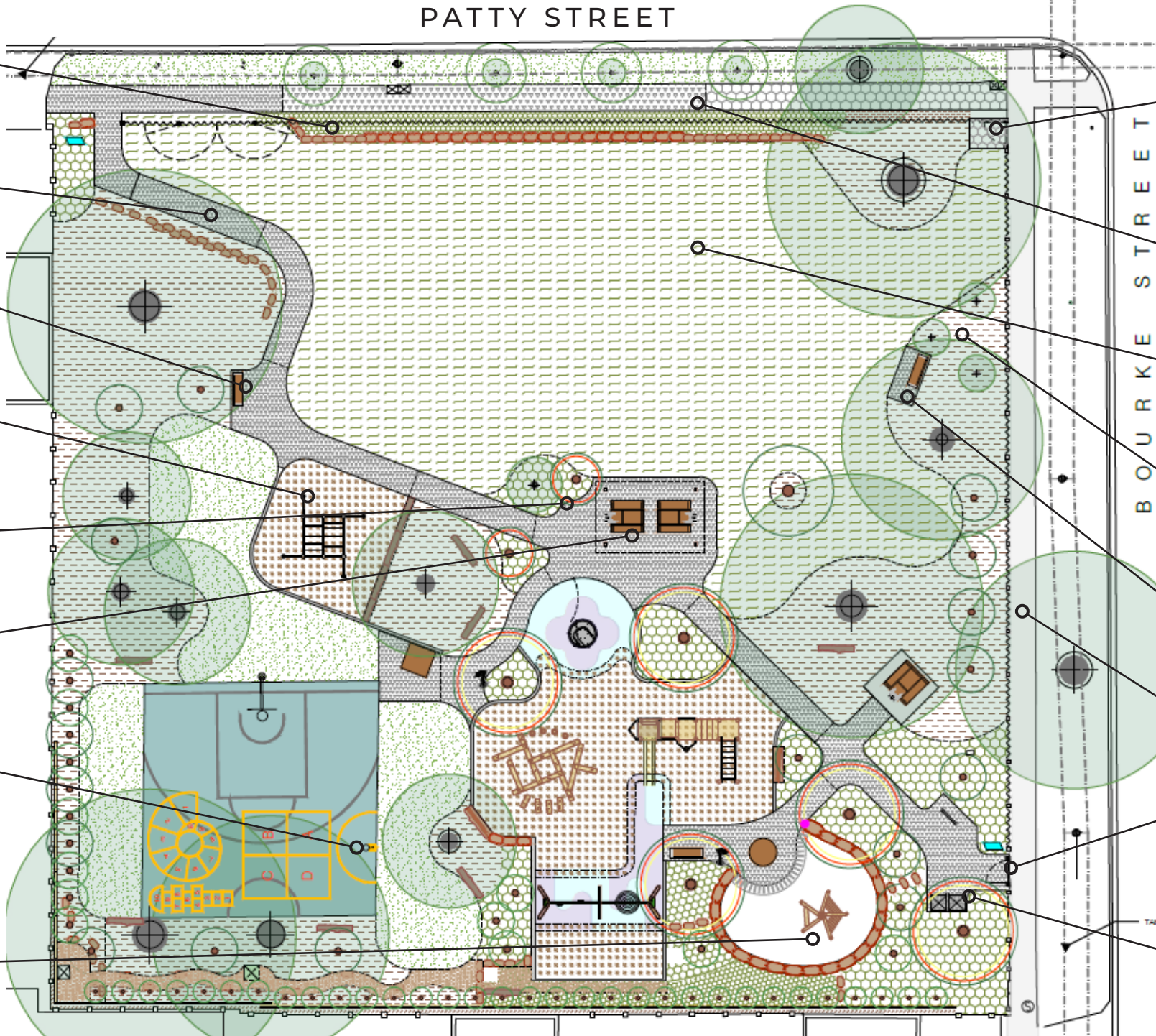


PATTY STREET

BOURKE STREET



New mesh fencing along Patty Street frontage

Upgraded pedestrian DDA concrete footpath

Extra seating away from the playground

New active recreation agility equipment

Drinking fountain with dog bowl

Shelter with two picnic tables

Netball hoop relocated to opposite side of existing basketball ½ court.

Sand pit with mudstone rock edging and tee-pee cubby with shop front and seating

Addition of a pedestrian gate at the corner of Bourke & Patty Reserve to close off this entrance.

New public footpath along Patty Street Road Reserve

Levelled open grass kickabout area

New native and tree and garden bed planting scattered within the reserve

Extra seating away from the playground

Existing mesh fencing along Bourke Street

New pedestrian gate at Bourke Street entrance near playground

New park infrastructure eg. bins and bike rack