

information bulletin

November 2019

Thames Promenade, Chelsea Heights (outside the shops) – zebra crossing with flashing lights

Background

In February 2019, Council consulted residents and the wider community about the safety of pedestrians crossing Thames Promenade outside the shops in Chelsea Heights.

Council undertook a study that confirmed the number of people crossing at this location warranted the installation of a zebra crossing (with flashing lights).

Council sought your feedback on the installation of the zebra crossing to improve safety – please see map and example overleaf for more information.

Council Action

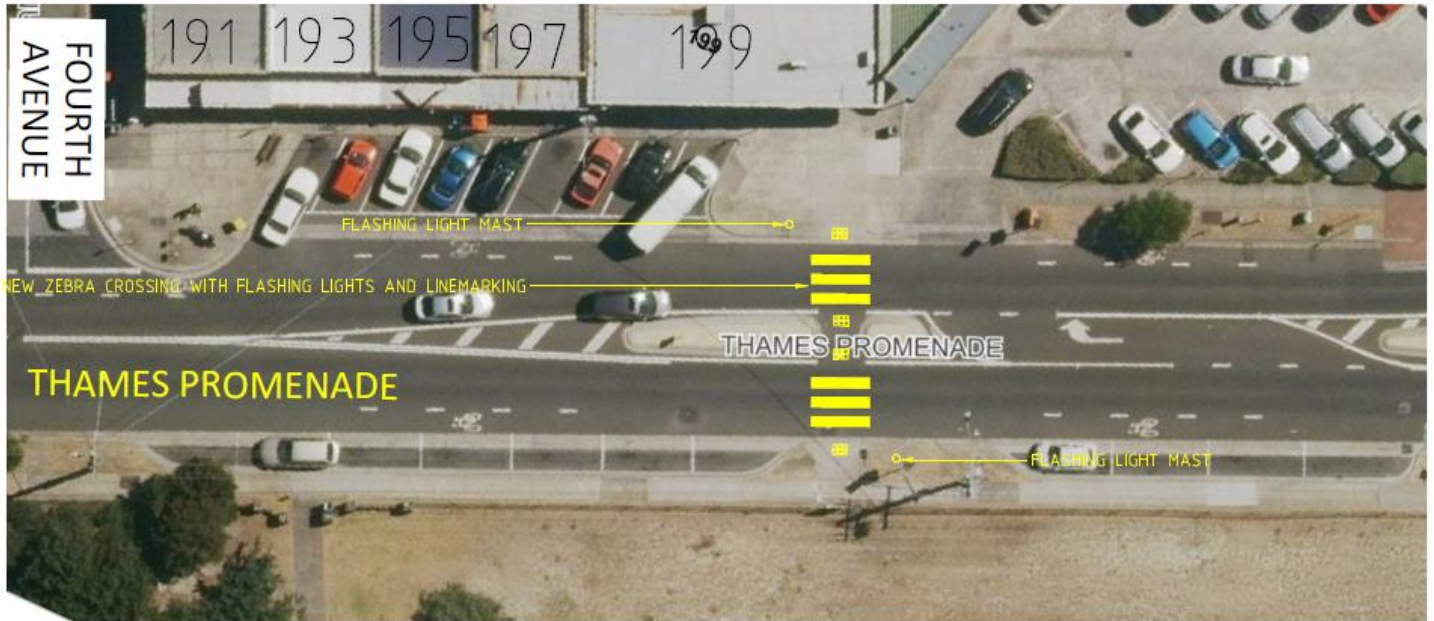
The feedback received showed a high level of support for the proposed crossing. Council will therefore undertake detailed design for the zebra crossing with the aim of installation in the 2020/2021 financial year. These traffic measures will help pedestrians safely cross Thames Promenade.

An update will be provided prior to construction.

Further Information

For further information please contact Traffic Engineer Alex Reid on 1300 653 356.

Thames Promenade, Chelsea Heights (outside the shops) – zebra crossing with flashing lights



Proposed location of zebra crossing



Example: crossing without flashing lights