

information bulletin

To the Owner / Occupier
PARKDALE VIC 3195

February 2020

Parkdale East of Nepean Highway

Background

In April 2019, Council sought feedback from residents on traffic management measures proposed in an area east of the Nepean Highway bounded by Keith Street, Imes Street, MacGregor Street and Warren Road. This was in response to resident's concerns about high volumes of non-local traffic using these roads as a cut-through route. The proposed traffic measures included:

1. Installing traffic calming measures such as flat-top speed humps and speed cushions along Imes Street, Chandler Street, MacGregor Street, Victoria Street and Keith Street.
2. Modifying the intersection of Keith Street with Nepean Highway to improve pedestrian safety and slow vehicle speed.
3. Implementing a speed hump at the intersection of Elm Grove with Nepean Highway to slow vehicles travelling at speed at this location.
4. Implementing a school crossing on Davey Street at its intersection with Brownfield Street and removing some on-street parking at the location to accommodate the crossing.

The feedback received supported the proposed changes. In response to the feedback the following amendments were made to the original proposals:

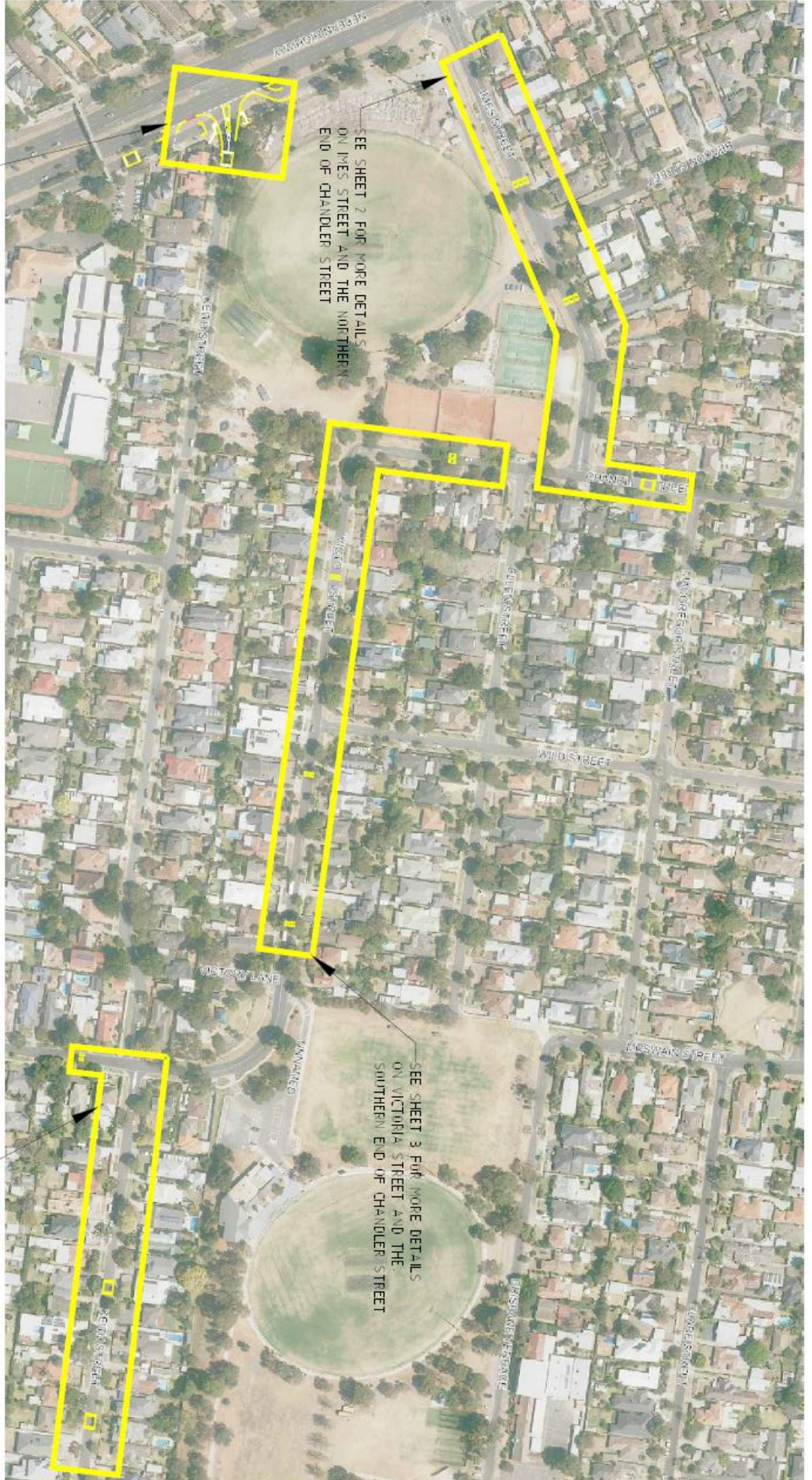
- Replace flat top speed humps on bus routes with speed cushions.
- Remove the traffic measures proposed on MacGregor Street as residents thought they were unnecessary due to the existing roundabout located at its intersection with Wild Street.
- Modify the intersection of Keith Street with Nepean Highway to better reflect resident's feedback and VicRoads' advice.
- Modify the design of the pedestrian crossing on Davey Street (south of Brownfield Street) to accommodate a new driveway crossing and an additional speed hump.
- Implement the speed hump at the intersection of Elm Grove with Nepean Highway outside this project.

The attached plans show the revised traffic measures for Parkdale – east of Nepean Highway. These will now be taken forward to detailed design – with implementation due in the financial year 2021/2022.

Further Information

For further information please contact Traffic Engineer Alex Reid on 1300 653 356.

Proposed traffic treatments



SEE SHEET 4, FOR MORE DETAILS ON KEITH STREET AND NEPEAN HIGHWAY INTERSECTION

SEE SHEET 2 FOR MORE DETAILS ON IES STREET AND THE NORTHERN END OF CHANDLER STREET

SEE SHEET 3 FOR MORE DETAILS ON VICTORIA STREET AND THE SOUTHERN END OF CHANDLER STREET

NOTE: CROSSING CONSTRUCTION WORKS TO OCCUR AT DAVEY STREET ARE NOT SHOWN ON THIS SHEET, BUT ARE SHOWN ON SHEET 5

SEE SHEET 3 FOR MORE DETAILS ON KEITH STREET

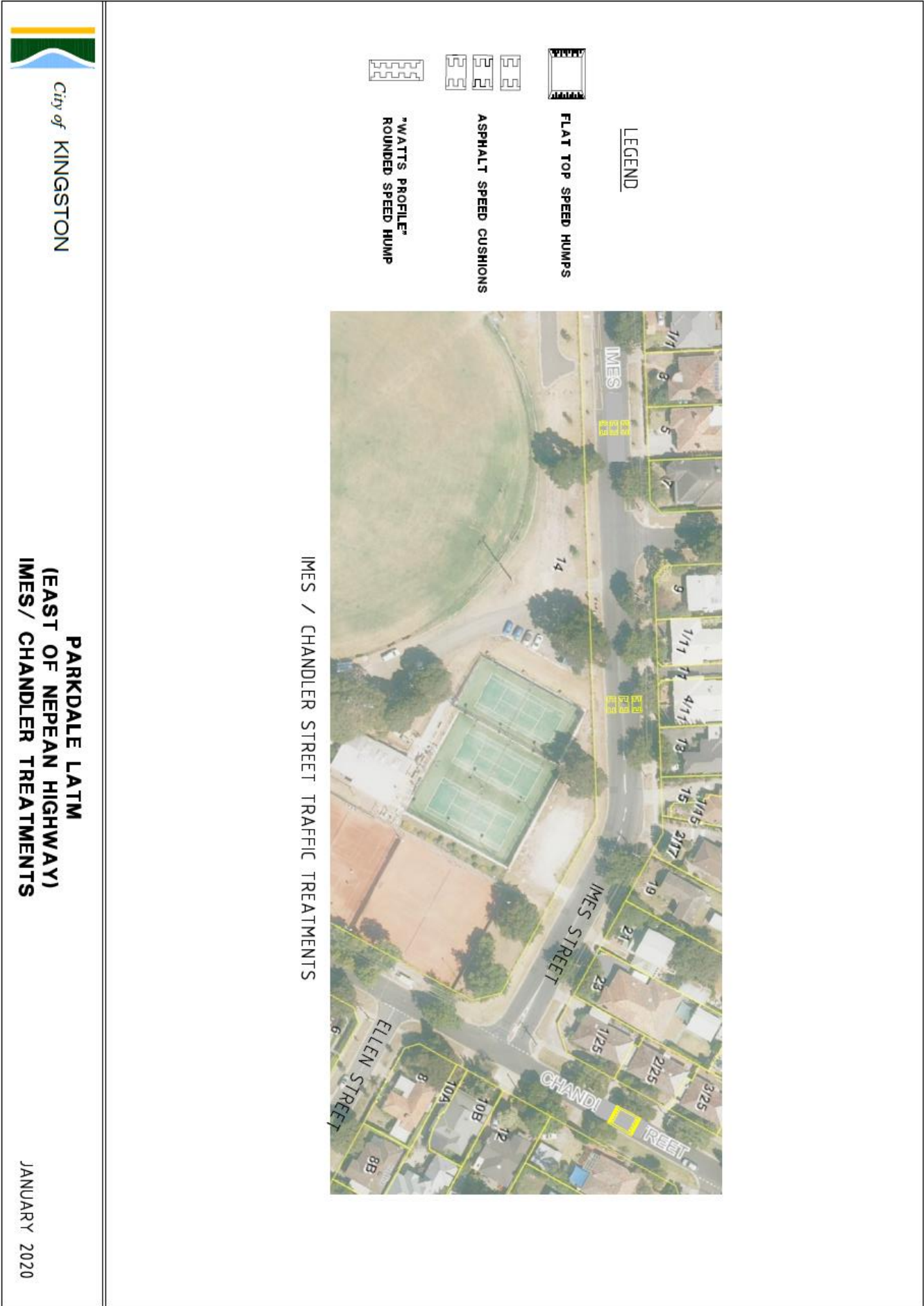


City of
KINGSTON

PARKDALE LATM (EAST OF NEPEAN HIGHWAY) OVERVIEW OF PROPOSED TRAFFIC TREATMENT AREAS

JANUARY 2020

Proposed traffic treatments



Proposed traffic treatments



VICTORIA/ CHANDLER STREET TRAFFIC TREATMENTS



KEITH STREET TRAFFIC TREATMENTS

- LEGEND**
-  FLAT TOP SPEED HUMPS WITH 6m LONG TOP AND MODIFIED RAMP HEIGHT TO SUIT BUSES.
 -  ASPHALT
 -  SPEED CUSHIONS



City of KINGSTON

**PARKDALE LATM
(EAST OF NEPEAN HIGHWAY)
VICTORIA/ CHANDLER AND KEITH STREET TREATMENTS**

JANUARY 2020

Proposed traffic treatments



City of KINGSTON

**PARKDALE LATM
(EAST OF NEPEAN HIGHWAY)
KEITH STREET TREATMENT**

JANUARY 2020



FLAT TOP SPEED HUMPS
WITH 6m LONG TOP

LEGEND



KEITH STREET AT NEPEAN HIGHWAY TREATMENT

Proposed traffic treatments

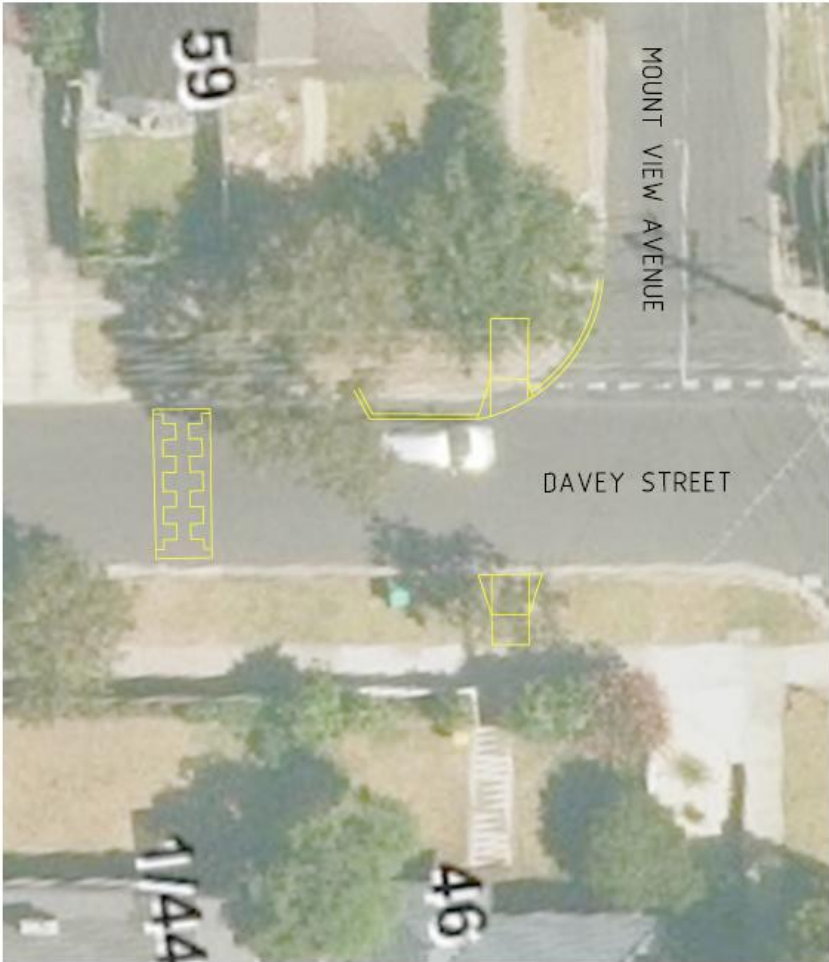


City of KINGSTON

**PARKDALE LATM
(EAST OF NEPEAN HIGHWAY)
DAVEY STREET CROSSING TREATMENT**

JANUARY 2020

DAVEY STREET CROSSING TREATMENT



"WATTS PROFILE"
ROUNDED SPEED HUMPH

LEGEND

