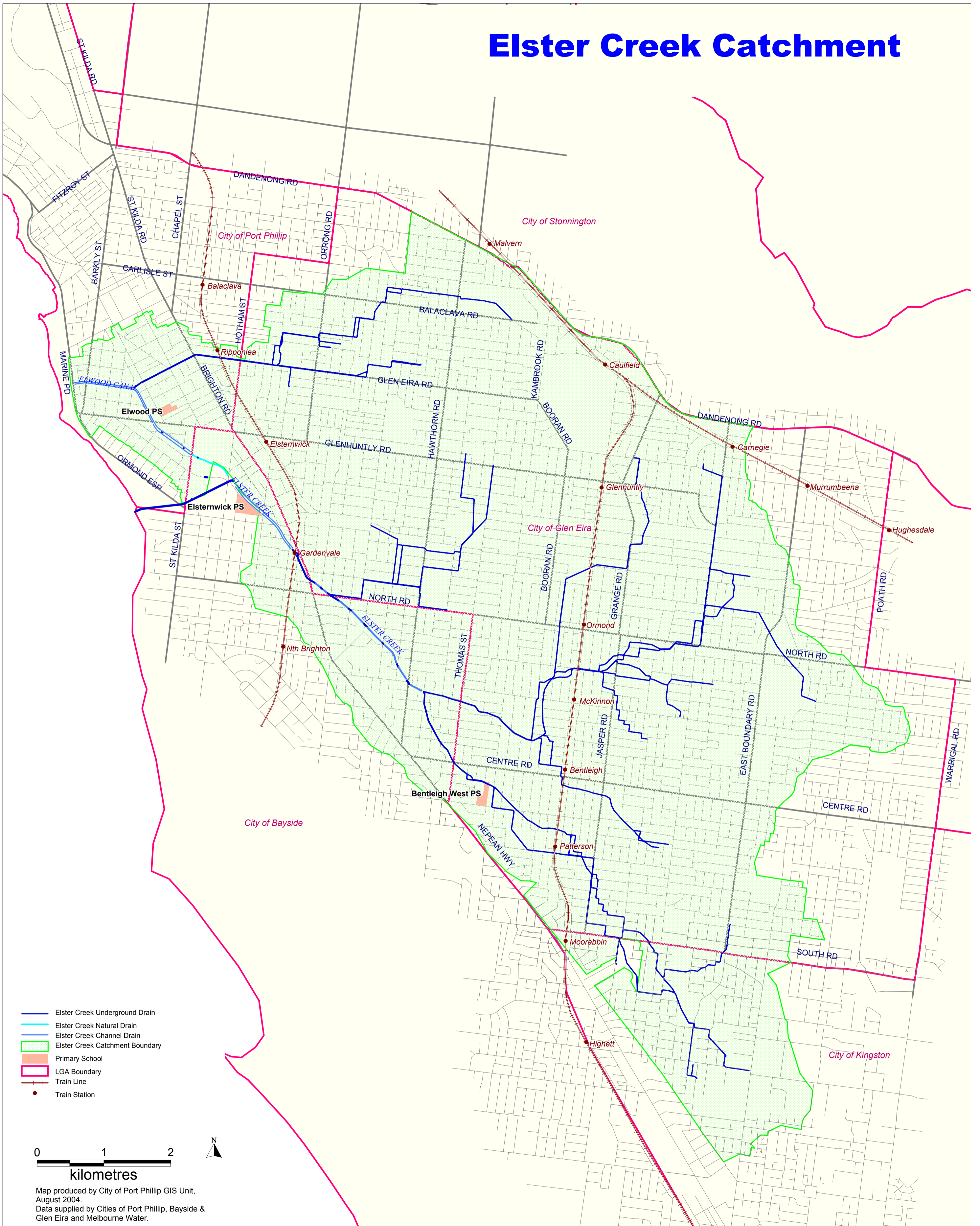


# Elster Creek Catchment



- Elster Creek Underground Drain
- Elster Creek Natural Drain
- Elster Creek Channel Drain
- Elster Creek Catchment Boundary
- Primary School
- LGA Boundary
- Train Line
- Train Station



Map produced by City of Port Phillip GIS Unit, August 2004.  
Data supplied by Cities of Port Phillip, Bayside & Glen Eira and Melbourne Water.



This initiative has been assisted by funding from the Victorian Government through EPA Victoria as part of the Victorian Stormwater Action Program.

