

VISION, PURPOSE AND DESIGN PILLARS

JANUARY 2023

NEW
**AQUATIC
& LEISURE
CENTRE
PROJECT**



VISION & PURPOSE

Vision

To deliver a high quality, inclusive and welcoming aquatic and leisure facility, that supports the physical, mental and social wellbeing of our community. With a focus on sustainability and functionality, our centre will bring a little of the outside in, whilst enhancing the natural and cultural environment. A place where everyone feels safe, confident and energised.

Purpose

A fun, safe and sustainable place that creates opportunities for people of all abilities to participate, learn and grow.

DESIGN PILLARS

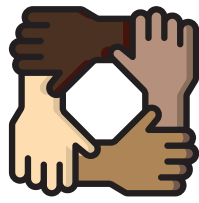


DESIGN PILLARS

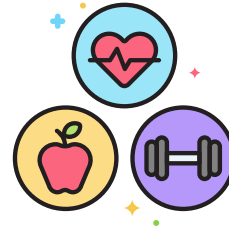
NEW
**AQUATIC
& LEISURE
CENTRE**
PROJECT



Sustainable



**Accessible
& inclusive**



Healthy



**Fun &
enjoyable**



**Safe &
flexible**

- Focus on locally sourced products that blend with the natural environment
- Durable and fit for purpose materials that are easily maintained and replaced as required
- Identify opportunities to harness renewable energy sources, in order to minimise the facility's impact on the environment both now and into the future
- Facilities that prioritise waste free operations and opportunities for recycling
- Multi-purpose and flexible spaces that allow for changing trends and regulations
- Encourage sustainable transport options such as walking, riding and public transport
- Identify and maximise facilities and spaces that will support financial sustainability of the centre into the future
- The design should reflect Council's environmental policies and strategies, through both construction and ongoing operations.

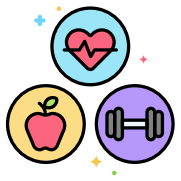


ACCESSIBLE & INCLUSIVE

NEW
**AQUATIC
& LEISURE
CENTRE**
PROJECT



- Promotes easy, safe and independent access to the centre whether walking, riding, driving or catching public transport
- Seamless connection between the centre and the reserve to create a community hub for the precinct
- Simple and easy to follow signage and wayfinding that can be understood by all
- Facilities within the centre must be accessible for all. Consider both physically and sensory
- Considered change room design solutions
- Gender Impact Assessment undertaken to ensure all members of community are considered



HEALTHY

NEW
**AQUATIC
& LEISURE
CENTRE**
PROJECT



- Consider viability of alternative water treatment systems in appropriate spaces e.g salt
- Design for a comfortable and enjoyable environment that encourages participation as well as promoting social connections
- High quality air handling, ventilation and acoustic treatments
- Design spaces that enable a diverse range of wellbeing programs
- Consider and reduce typical barriers to participation



FUN & ENJOYABLE

NEW
**AQUATIC
& LEISURE
CENTRE**
PROJECT



- Bright and welcoming spaces using natural light, materials, and colour treatments
- Formal and informal spaces for social interaction and community inclusion
- Water features to be mindful of noise and air quality implications
- Seating areas for a range of users that encourage comfort and enjoyment
- Logical flow for ease of use
- Aquatic recreation spaces that allow for free play and exercise
- Future focus ensuring spaces can adjust to changes in trends over time
- Aesthetically connect the indoors with the outdoors, considering outdoor play opportunities



SAFE & FLEXIBLE

NEW
**AQUATIC
& LEISURE
CENTRE**
PROJECT



- Multi-purpose spaces that optimise access for a range of uses and users
- Maximise visibility both externally and within the centre
- Design to appropriate standards and regulations, with operational demands front of mind
- Encourage community connections and comfort
- Aquatic areas should cater for people with all levels of aquatic experience, skills and confidence
- Perceptions of safety should be considered and maximised